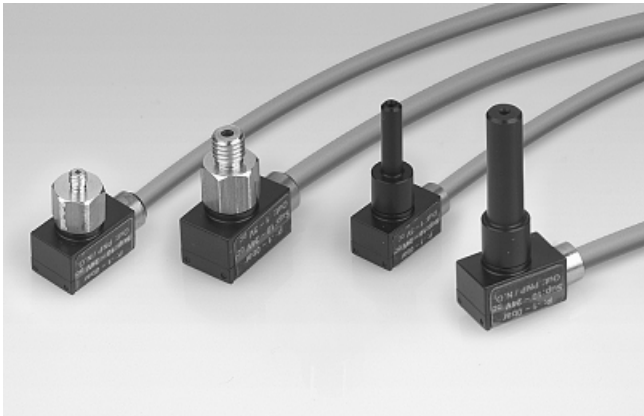


Vacuum switches

Vacuum switch VS-V-SA/SD



Vacuum switches VS-V-SA/SD

Our highlights...

- Minimum size and low weight
- Optionally with analogue or digital output
- High measuring accuracy
- Vacuum connection with M3 or M5 thread or with diameter 4 or 6 mm plug-in tubes, according to version

Your advantages...

- >Optimum installation in vacuum systems, even those subject to high rates of acceleration
- >Suitable sensors for various applications
- >Precise output signals
- >Flexible mounting facilities

Applications

- Measurement of vacuum values close to the suction pad; remote evaluation of the signals in, for example, a stored-program controller



Construction

- Mini-sensor with housing and connection cable
- Available with either screw connector or plug connector
- Analogue or digital output signal

Suitability for branch-specific applications



Designation code Vacuum switch VS-V-SA/SD

Short designation	Measuring range	Principle of function	Switching point	Vacuum connection
Example: VS	V	SD	60	D6
VS	V...-1 to 0 bar	SD...digital sensor SA...analogue sensor	...no specification for analogue sensor 60...switching point -600 mbar	D4...plug-in tube D4 D6...plug-in tube D6 M3...thread M3 M5...thread M5



Ordering data Vacuum switch VS-V-SA/SD

Type	Article No.
VS-V-SA-M5	10.06.02.00224
VS-V-SA-M3	10.06.02.00225
VS-V-SA-D4	10.06.02.00226
VS-V-SA-D6	10.06.02.00227
VS-V-SD-60-M5	10.06.02.00257
VS-V-SD-60-M3	10.06.02.00258
VS-V-SD-60-D4	10.06.02.00259
VS-V-SD-60-D6	10.06.02.00260

Vacuum switches

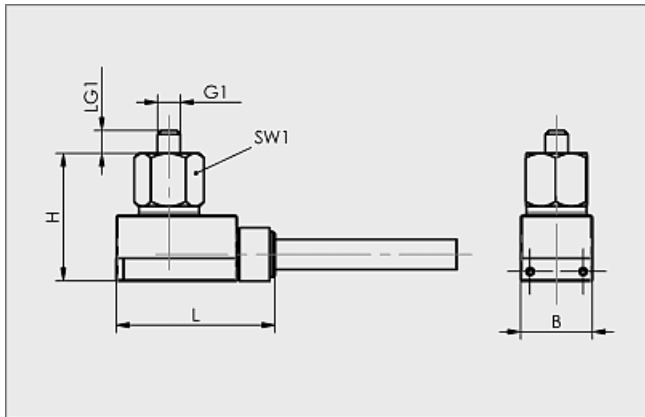
Vacuum switch VS-V-SA/SD



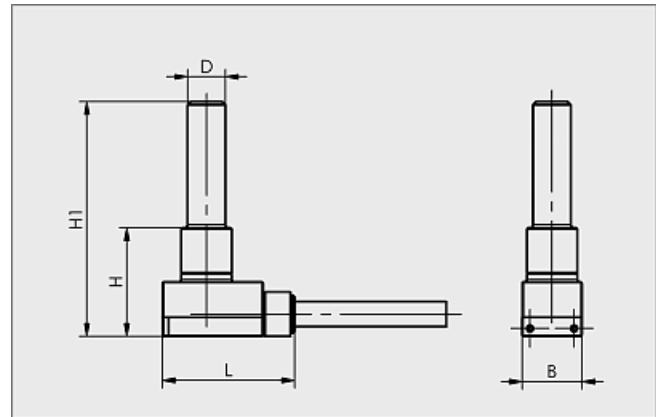
Technical data Vacuum switch VS-V-SA/SD

Type	VS-V-SA-M...	VS-V-SA-D..	VS-V-SD-60-M...	VS-V-SD-60-D...
Measured medium	Non-aggressive gases; dry, oil-free air	Non-aggressive gases; dry, oil-free air	Non-aggressive gases; dry, oil-free air	Non-aggressive gases; dry, oil-free air
Measuring range	-1...0 bar	-1...0 bar	-1...0 bar	-1...0 bar
Max. overpressure resistance [bar]	5	5	5	5
Repeatability	± 1% of full-scale value	± 1% of full-scale value	± 1% of full-scale value	± 1% of full-scale value
Hysteresis	-	-	Fixed: approx. 20 mbar	Fixed: approx. 20 mbar
Output signal	Analogue: 1...5 V	Analogue: 1...5 V	1 digital	1 digital
Switching capacity [mA]	-	-	60	60
Point attitude	-	-	- 600 mbar	- 600 mbar
Indication	-	-	LED	LED
Electrical connection	Cable	Cable	Cable	Cable
Voltage	10-24V DC	10-24V DC	10-24V DC	10-24V DC
Protection IP	IP 40	IP 40	IP 40	IP 40
Temperature influence	± 3% of full-scale value	± 3% of full-scale value	± 3% of full-scale value	± 3% of full-scale value
Operating temperature [°C]	0...50 °C	0...50 °C	0...50 °C	0...50 °C
Length of cable [m]	3	3	3	3
Weight [g]	5	5	5	5

Design data Vacuum switch VS-V-SA/SD



VS-V-SA/SD-M3 and M5



VS-V-SA/SD-D4 and D6

Type	Dimensions in mm							
	B	D	G1	H	H1	L	LG1	SW1
VS-V-SA/SD-M3	9,5	-	M3-M	16,9	-	21	3	8
VS-V-SA/SD-M5	9,5	-	M5-M	16,9	-	21	5	8
VS-V-SA/SD-D4	9,5	4	-	17,2	32,2	21	-	-
VS-V-SA/SD-D6	9,5	6	-	17,2	37,2	21	-	-