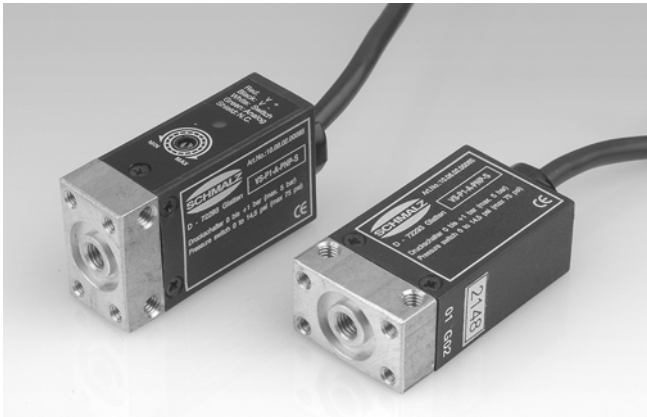


# Pressure switches

## Pressure switch VS-P1-A-PNP-S



Pressure switches VS-P1-A-PNP-S

### Our highlights...

- Electronic pressure switch
- Switching point adjustable

### Your advantages...

- > Electronically precise measurement and switching
- > Can be adapted optimally to meet customer requirements

### Applications

- Universal electronic pressure switch for all safety monitoring tasks, optimisation of cycle times and regulation circuits
- Small size and low weight permit installation directly at the point of use

### Construction

- Electronic pressure switch in robust polycarbonate housing
- Pressure connection via flange; additional M5 female thread
- Switching point adjustable with a screw, hysteresis fixed
- Electrical connection via 4-core cable
- Integrated LED for indication of the switching state



### Suitability for branch-specific applications

#### Ordering designation Pressure switch VS-P1-A-PNP-S

Short designation	Measuring range	Connections	Switching function	Electrical connection	Additional function
Example: VS	P1	A	PNP	K	S
VS	P1...0 to 1 bar	A...flange connection	PNP... switches to +	K..... with cable	S... with fixed hysteresis

#### Ordering data Pressure switch VS-P1-A-PNP-S

Type	Part NO.
VS-P1-A-PNP-K-S	10.06.02.00085

# Pressure switches

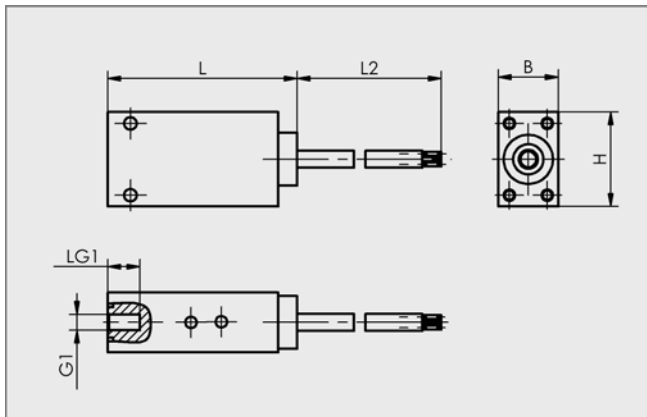
## Pressure switch VS-P1-A-PNP-S



### Technical data Pressure switch VS-P1-A-PNP-S

Type	VS-P1-A-PNP-K-S
Measured medium	Non-aggressive gases; dry, oil-free air
Measuring range	0...1 bar
Max. overpressure resistance [bar]	5
Repeatability	5 mbar
Hysteresis	Fixed: max. 15 mbar
Output signal	Analogue: 1...5 V
Switching capacity [mA]	125
Indication	LED
Electrical connection	Cable
Measured medium connection	Thread M5-F
Voltage	12-24V DC
Current consumption [mA]	30
Protection IP	IP 40
Temperature influence	1 mbar/°C
Operating temperature	-20...70 °C
Weight [g]	80

### Design data Pressure switch VS-P1-A-PNP-S



Type	Dimensions in mm					
	B	G1	H	L	L2	LG1
VS-P1-A-PNP-K-S	15,8	M5-F	25,0	50,0	2000	5,0

VS-P1-A-PNP-K-S