

Check valves

Check valves SVN



Check valves SVN

Our highlights...

- Special check valve with flying ball
- Integrated nipple for connection of a suction pad
- Check valve with self-cleaning effect
- Reaction dependent on the volume flow rate
- Minimum size

Your advantages...

- > Reduction of the cross-section of the vacuum line leading to an unused suction pad; special version for porous workpieces
- > No additional nipple needed for many different types of suction pad
- > Special version for use in dusty surroundings
- > Not triggered by the normal leakage encountered when handling porous workpieces
- > Also suitable for use in restricted spaces

Applications

- Primarily for maintaining the overall system vacuum in vacuum gripper systems used for handling porous workpieces; if a suction pad is not in contact with the workpiece or is pulled off, the flow rate is greatly reduced
- Handling of porous workpieces in dusty surroundings

Construction

- Flying-ball valve mounted in a space-saving manner in an aluminum body
- Blow-off function provides self-cleaning effect for use in dusty surroundings
- Molded-on nipple for various types of suction pads (size identical to that of a standard nipple)

Suitability for branch-specific applications



Ordering data Check valves SVN

Type	Article No.
SVN G1/4-AG N011	10.05.03.00068
SVN G1/4-AG N012	10.05.03.00074
SVN G1/4-AG N013	10.05.03.00066
SVN G1/4-AG N014	10.05.03.00070
SVN G1/4-AG N015	10.05.03.00072
SVN G1/4-AG N018	10.05.03.00054
SVN G1/4-AG N019	10.05.03.00056
SVN G1/4-AG M10x1.25-AG N009	10.05.03.00060

Check valves

Check valves SVN

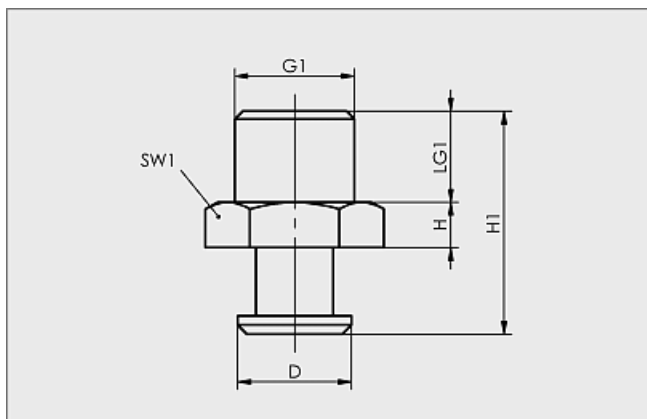


Technical data Check valves SVN

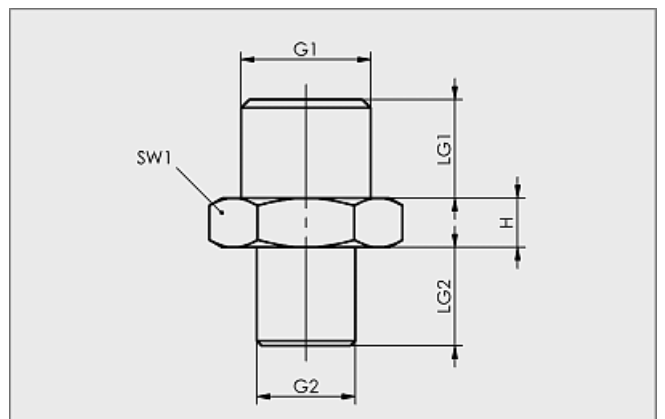
Type	Required evacuation rate for pu = -0,3 bar [m³/h]	Required evacuation rate for pu = -0,3 bar [l/min]	Required evacuation rate for pu = -0,6 bar [m³/h]	Required evacuation rate for pu = -0,6 bar [l/min]	Max. flow rate [m³/h] when blowing off*	Max. flow rate [l/min] when blowing off*	Weight [g]
SVN G1/4-AG N011	2,3	38,3	3,3	55	27	450	8
SVN G1/4-AG N012	2,3	38,3	3,3	55	27	450	15
SVN G1/4-AG N013	2,3	38,3	3,3	55	27	450	9
SVN G1/4-AG N014	2,3	38,3	3,3	55	27	450	12
SVN G1/4-AG N015	2,3	38,3	3,3	55	27	450	18
SVN G1/4-AG N018	2,3	38,3	3,3	55	27	450	8
SVN G1/4-AG N019	2,3	38,3	3,3	55	27	450	18
SVN G1/4-AG M10x1.25-AG N009	2,3	38,3	3,3	55	27	450	10

*Blow-off pressure 5bar

Design data Check valves SVN



SVN G1/4



SVN G1/4-AG M10x1.25-AG N009

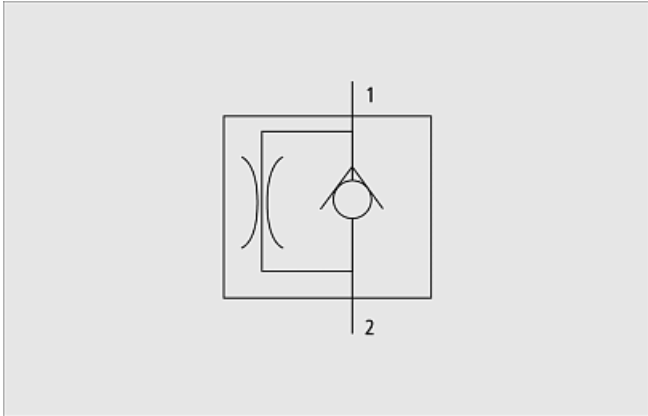
Type	Dimensions in mm							
	D	G1	G2	H	H1	LG1	LG2	SW1
SVN G1/4-AG N011	12,5	G1/4"-M	-	5	25	10	9,5	17
SVN G1/4-AG N012	18,0	G1/4"-M	-	5	30	10	14,5	22
SVN G1/4-AG N013	12,5	G1/4"-M	-	5	29	10	13,5	17
SVN G1/4-AG N014	16,5	G1/4"-M	-	5	30	10	14,5	17
SVN G1/4-AG N015	16,5	G1/4"-M	-	5	38	10	22,5	22
SVN G1/4-AG N018	14,0	G1/4"-M	-	5	29	11	14,0	17
SVN G1/4-AG N019	20,0	G1/4"-M	-	6	40	11	23,0	21
SVN G1/4-AG M10x1.25-AG N009	-	G1/4"-M	M10x1.25-M	5	10	10	10,0	17

Check valves

Check valves SVN



Functional circuit diagram Check valves SVN



Circuit diagram SVN