

# Check valves

Check valves SVK, SVKG, SVV



Check valves SVK, SVKG, SVV

## Our highlights...

- Check valve in the form of a ball seat valve
- Reaction dependent on the volume flow rate
- Wide range of nominal sizes
- Available with male thread at the top (type SVK) or bottom (type SVKG)

## Your advantages...

- >Closing of vacuum lines leading to unused suction pads to maintain the system vacuum
- >Low leakage rate which can be compensated with the aid of a bypass
- >Also suitable for use in applications with high nominal flow rates
- >Can be connected to all common suction pads and plates

## Applications

- Applications where some of the suction pads may not be in contact with the workpiece (deactivation of unused suction pads to maintain the system vacuum)
- Handling of workpieces with varying sizes and shapes with the same gripper system



## Construction

- Ball seat valve
- Ball in brass seat, installed in a space-saving manner in an aluminum body
- On the type SVV, the flow rate can be adjusted continuously with an adjusting screw

## Suitability for branch-specific applications

## Ordering data Check valves SVK, SVKG, SVV

Type	Article No.
SVK M5-IG	10.05.03.00033
SVK G1/8-IG	10.05.03.00034
SVK G1/4-IG	10.05.03.00035
SVK G3/8-IG	10.05.03.00036
SVK G1/2-IG	10.05.03.00037
SVKG M5-AG	10.05.03.00166
SVKG G1/8-AG	10.05.03.00128
SVKG G1/4-AG	10.05.03.00131
SVKG G3/8-AG	10.05.03.00135
SVKG G1/2-AG	10.05.03.00133
SVV G1/4-IG	10.05.03.00003

# Check valves

Check valves SVK, SVKG, SVV

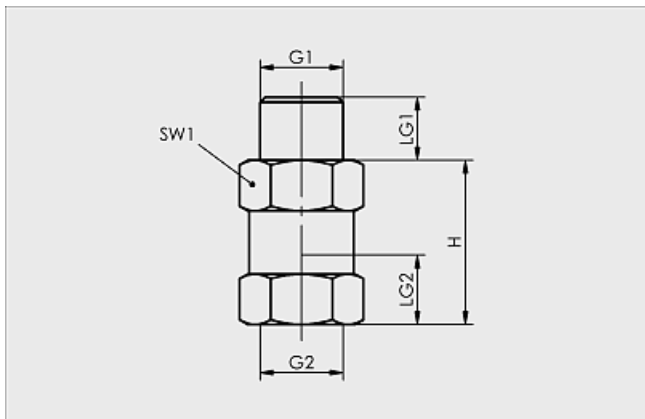


## Technical data Check valves SVK, SVKG, SVV

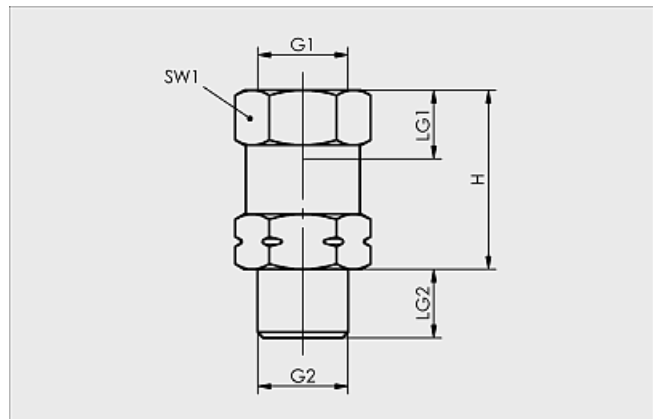
Type	Required evacuation rate for $p_u = -0,3$ bar [ $m^3/h$ ]	Required evacuation rate for $p_u = -0,3$ bar [ $l/min$ ]	Required evacuation rate for $p_u = -0,6$ bar [ $m^3/h$ ]	Required evacuation rate for $p_u = -0,6$ bar [ $l/min$ ]	Max. flow rate [ $m^3/h$ ] when blowing off*	Max. flow rate [ $l/min$ ] when blowing off*	Weight [g]
SVK M5-IG	0,07	1,2	0,08	1,3	4,8	80	2,2
SVK G1/8-IG	0,14	2,3	0,15	2,5	18,6	310	11,2
SVK G1/4-IG	0,17	2,9	0,20	3,4	20,4	340	17,5
SVK G3/8-IG	0,44	7,3	0,48	8,0	35,4	590	30,3
SVK G1/2-IG	0,49	8,1	0,54	9,0	47,4	790	47,4
SVKG M5-AG	0,07	1,2	0,08	1,3	4,8	80	2,2
SVKG G1/8-AG	0,14	2,3	0,15	2,5	18,6	310	11,2
SVKG G1/4-AG	0,17	2,9	0,20	3,4	20,4	340	17,5
SVKG G3/8-AG	0,44	7,3	0,48	8,0	35,4	590	30,3
SVKG G1/2-AG	0,49	8,1	0,54	9,0	47,4	790	47,4
SVV G1/4-IG	0 to 1,36	0 to 22,6	0 to 1,72	0 to 28,6	24,0	400	24,7

\*Blow-off pressure 5bar

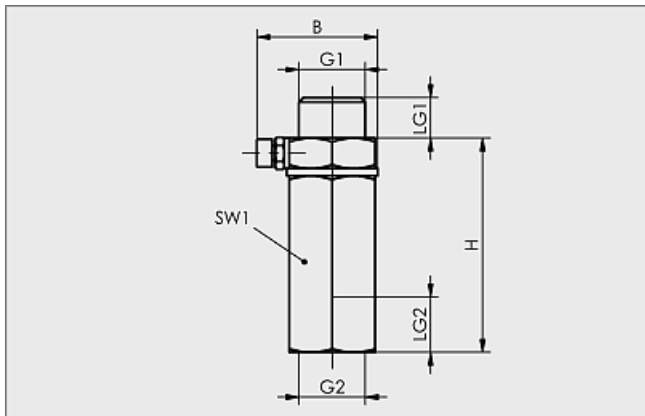
## Design data Check valves SVK, SVKG, SVV



SVK M5 to G1/2



SVKG M5 to G1/2



SVV G1/4

# Check valves

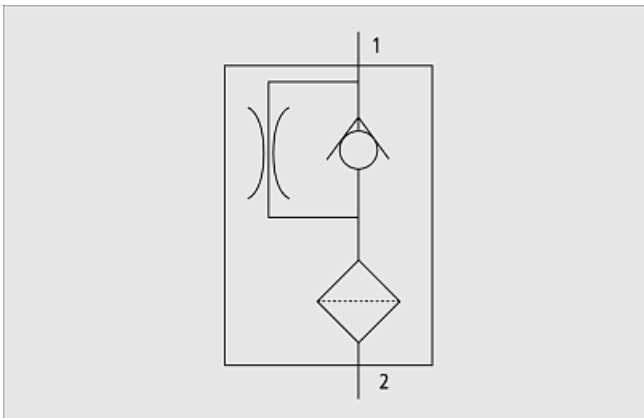
Check valves SVK, SVKG, SVV



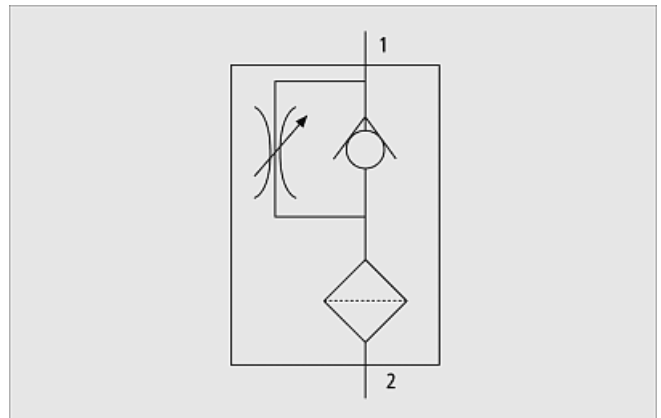
## Design data Check valves SVK, SVKG, SVV

Type	Dimensions in mm						
	B	G1	G2	H	LG1	LG2	SW1
SVK M5-IG	-	M5-M	M5-F	15,5	4,5	4,5	8
SVK G1/8-IG	-	G1/8"-M	G1/8"-F	26,0	8,0	8,5	14
SVK G1/4-IG	-	G1/4"-M	G1/4"-F	26,0	10,0	11,0	17
SVK G3/8-IG	-	G3/8"-M	G3/8"-F	29,0	10,0	12,0	22
SVK G1/2-IG	-	G1/2"-M	G1/2"-F	29,0	12,0	14,0	27
SVKG M5-AG	-	M5-F	M5-M	20,0	4,5	4,5	8
SVKG G1/8-AG	-	G1/8"-F	G1/8"-M	26,0	8,5	8,0	14
SVKG G1/4-AG	-	G1/4"-F	G1/4"-M	26,0	11,0	10,0	17
SVKG G3/8-AG	-	G3/8"-F	G3/8"-M	29,0	12,0	10,0	22
SVKG G1/2-AG	-	G1/2"-F	G1/2"-M	29,0	14,0	12,0	27
SVV G1/4-IG	23,5	G1/4"-M	G1/4"-F	42,0	8,0	11,0	17

## Functional circuit diagram Check valves SVK, SVKG, SVV



Circuit diagram SVK/SVKG



Circuit diagram SVV