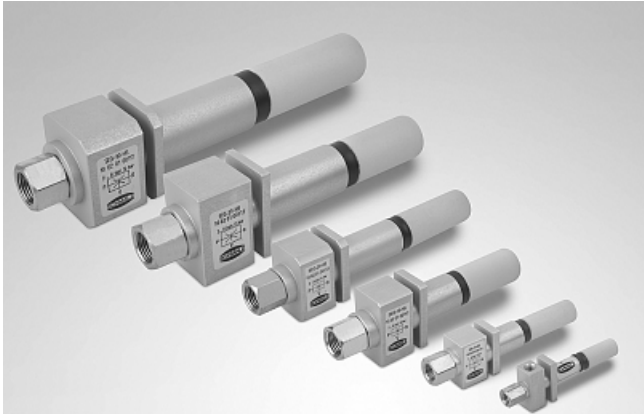


Basic ejectors

Basic ejectors SEG



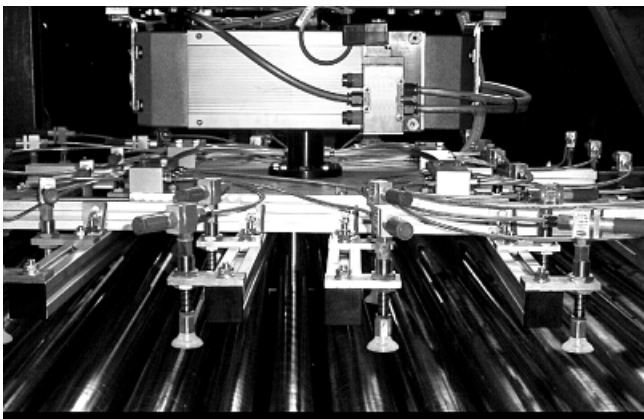
Basic ejector SEG

Our highlights...

- Body with Venturi nozzle and optionally with silencer
- Minimum size; low weight due to aluminum body
- Various models with different performance figures; optimized for maximum efficiency

Your advantages...

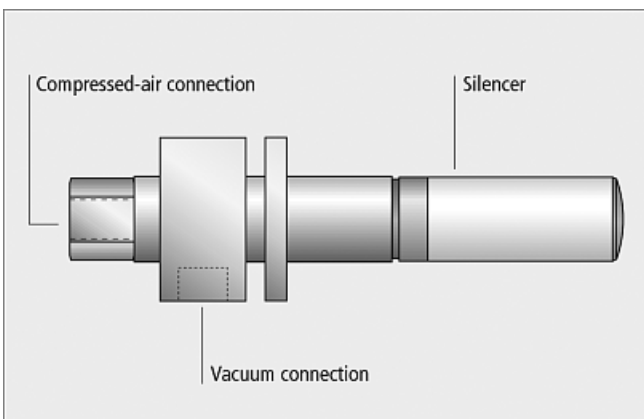
- >No moving parts: no wear and no maintenance needed
- >Suitable for small spaces and highly dynamic movements, such as on manipulators, industrial robots, feeder systems, etc.
- >Very efficient: maximum suction capacity with minimum compressed-air consumption



Vacuum spider with separate vacuum generator (basic ejector SEG) for each suction pad

Applications

- For universal use
- Various handling tasks in the automotive, sheet-metal and wood-working sectors and in the foodstuffs and packing industries



System design basic ejector SEG

Construction

- Body made of anodized aluminum
- Nozzle system made of brass
- Plastic silencer



Suitability for branch-specific applications

Basic ejectors

Basic ejectors SEG



Designation code Basic ejectors SEG

Short designation	Nozzle size in mm*10	Shape	Additional function
Example: SEG	10	HS	SDA
SEG	05...0.5 mm to 30...3.0 mm	HS..... high speed (high vacuum) LS..... low speed (high suction capacity) HS-S... high speed narrow shape	-..... without silencer SDA... with axial silencer



Ordering data Basic ejectors SEG

Type	Article No.
SEG 05 HS-S	10.02.01.00272
SEG 05 HS-S SDA	10.02.01.00271
SEG 07 HS-S	10.02.01.00276
SEG 07 HS-S SDA	10.02.01.00275
SEG 07 HS	10.02.01.00255
SEG 07 HS SDA	10.02.01.00110
SEG 10 HS	10.02.01.00247
SEG 10 HS SDA	10.02.01.00111
SEG 15 HS	10.02.01.00248
SEG 15 HS SDA	10.02.01.00112
SEG 20 HS	10.02.01.00256
SEG 20 HS SDA	10.02.01.00113
SEG 20 LS	10.02.01.00252
SEG 20 LS SDA	10.02.01.00114
SEG 25 HS	10.02.01.00257
SEG 25 HS SDA	10.02.01.00115
SEG 25 LS	10.02.01.00259
SEG 25 LS SDA	10.02.01.00116
SEG 30 HS	10.02.01.00258
SEG 30 HS SDA	10.02.01.00117
SEG 30 LS	10.02.01.00260
SEG 30 LS SDA	10.02.01.00118

Vacuum generators
5

Basic ejectors

Basic ejectors SEG



Ordering data spare parts Basic ejectors SEG

Type	Silencer
SEG 05 HS-S	-
SEG 05 HS-S SDA	10.02.01.00539
SEG 07 HS-S	-
SEG 07 HS-S SDA	10.02.01.00539
SEG 07 HS	-
SEG 07 HS SDA	10.02.01.00540
SEG 10 HS	-
SEG 10 HS SDA	10.02.01.00540
SEG 15 HS	-
SEG 15 HS SDA	10.02.01.00903
SEG 20 HS	-
SEG 20 HS SDA	10.02.01.00905
SEG 20 LS	-
SEG 20 LS SDA	10.02.01.00905
SEG 25 HS	-
SEG 25 HS SDA	10.02.01.00907
SEG 25 LS	-
SEG 25 LS SDA	10.02.01.00907
SEG 30 HS	-
SEG 30 HS SDA	10.02.01.00909
SEG 30 LS	-
SEG 30 LS SDA	10.02.01.00909

Technical data Basic ejectors SEG

Type	Nozzle-Ø [mm]	Degree of evacuation [%]	Max. suction rate [l/min]	Max. suction rate [m³/h]	Air consumpt. during evac. [l/min]*	Air consumpt. during evac. [m³/h]*	Operating pressure [bar]	Recomm. int. hose diameter compr. air [mm]**	Recomm. int. hose diameter vacuum [mm]**	Weight [g]	Operating temperature [°C]
SEG 05 HS-S	0,5	82	7	0,4	13	0,8	5	2	2	10	-10...80
SEG 05 HS-S SDA	0,5	82	7	0,4	13	0,8	5	2	2	11	-10...80
SEG 07 HS-S	0,7	82	16	1,0	21	1,3	5	2	2	10	-10...80
SEG 07 HS-S SDA	0,7	82	16	1,0	21	1,3	5	2	2	11	-10...80
SEG 07 HS	0,7	85	14	0,8	21	1,3	5	2	4	41	-10...80
SEG 07 HS SDA	0,7	85	14	0,8	21	1,3	5	2	4	45	-10...80
SEG 10 HS	1,0	85	34	2,0	49	2,9	5	2	4	46	-10...80
SEG 10 HS SDA	1,0	85	34	2,0	49	2,9	5	2	4	50	-10...80
SEG 15 HS	1,5	85	69	4,1	102	6,1	5	4	6	102	-10...80
SEG 15 HS SDA	1,5	85	69	4,1	102	6,1	5	4	6	110	-10...80
SEG 20 HS	2,0	85	124	7,4	186	11,2	5	4	9	118	-10...80
SEG 20 HS SDA	2,0	85	124	7,4	186	11,2	5	4	9	130	-10...80
SEG 20 LS	2,0	55	170	10,2	186	11,2	5	4	9	118	-10...80
SEG 20 LS SDA	2,0	55	170	10,2	186	11,2	5	4	9	130	-10...80
SEG 25 HS	2,5	85	184	11,0	275	16,5	5	6	12	273	-10...80
SEG 25 HS SDA	2,5	85	184	11,0	275	16,5	5	6	12	295	-10...80
SEG 25 LS	2,5	55	260	15,6	275	16,5	5	6	12	273	-10...80
SEG 25 LS SDA	2,5	55	260	15,6	275	16,5	5	6	12	295	-10...80
SEG 30 HS	3,0	85	240	14,4	392	23,5	5	6	12	352	-10...80
SEG 30 HS SDA	3,0	85	240	14,4	392	23,5	5	6	12	404	-10...80
SEG 30 LS	3,0	55	370	22,2	392	23,5	5	6	12	352	-10...80
SEG 30 LS SDA	3,0	55	370	22,2	392	23,5	5	6	12	404	-10...80

*At optimal operating pressure

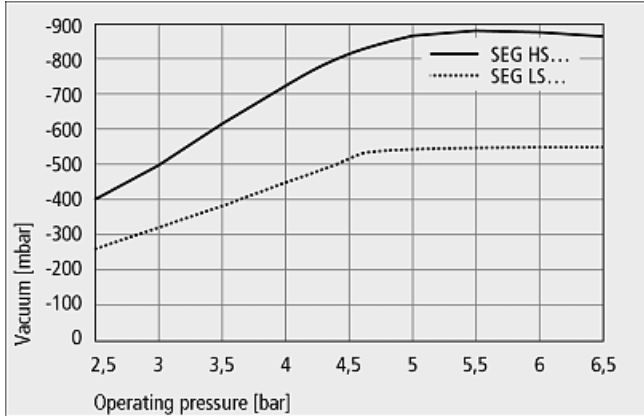
**For max. length 2 m

Basic ejectors

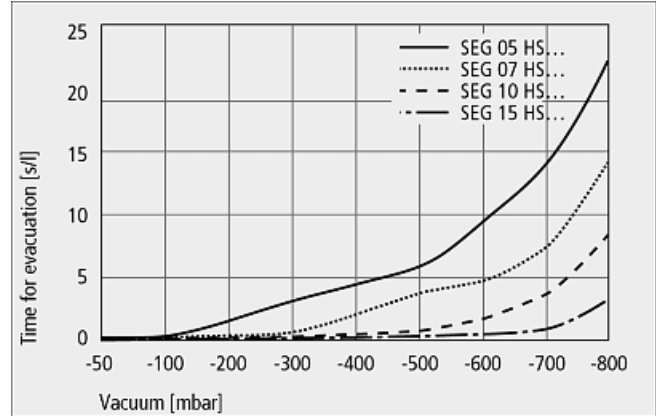


Basic ejectors SEG

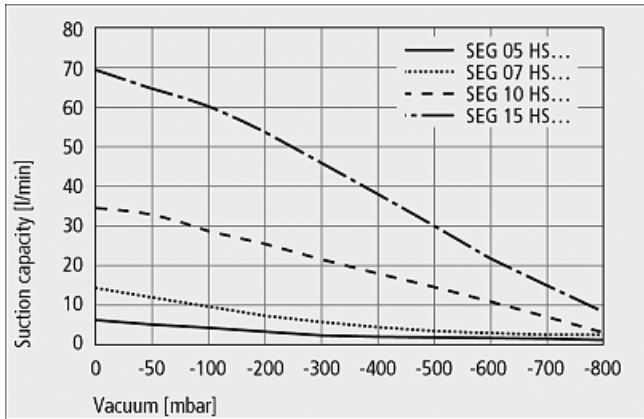
Performance data Basic ejectors SEG



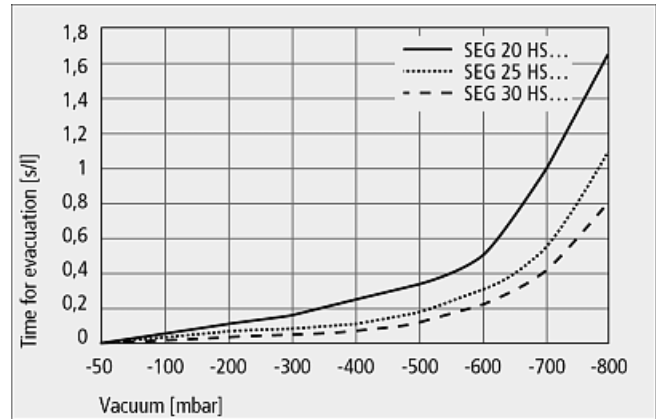
Achievable vacuum at various operating pressures



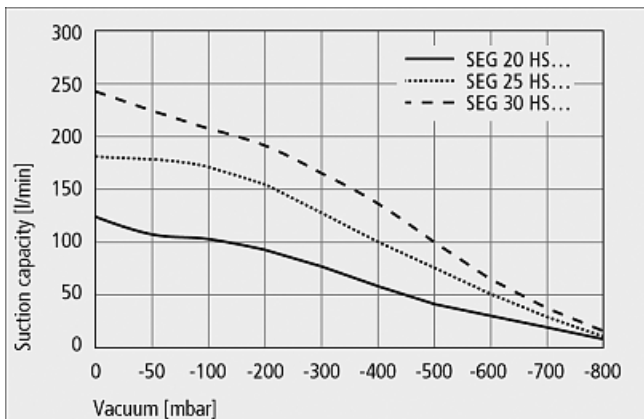
Evacuation times for various vacuum ranges



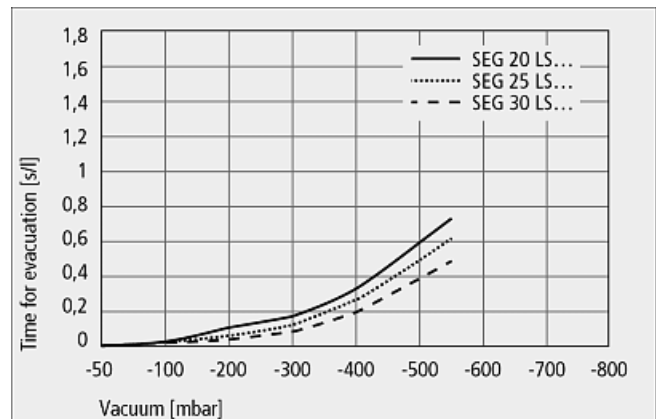
Suction capacity at various degrees of evacuation



Evacuation times for various vacuum ranges



Suction capacity at various degrees of evacuation



Evacuation times for various vacuum ranges

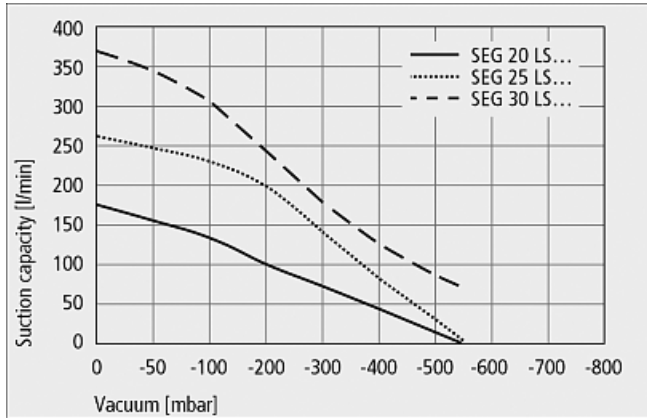
Vacuum generators
5

Basic ejectors

Basic ejectors SEG



Performance data Basic ejectors SEG



Suction capacity at various degrees of evacuation

Suction capacity in l/min at various degrees of evacuation

Type	Degree of evacuation in mbar									
	0	-50	-100	-200	-300	-400	-500	-600	-700	-800
SEG 05 HS-S	7	5.9	5.1	4.3	3.4	2.6	1.9	1.4	0.5	0.2
SEG 07-HS-S	16	11.7	10.3	8.6	6.8	5.3	3.9	2.8	1.1	0.4
SEG 07 HS	14	11.7	10.3	8.6	6.8	5.3	3.9	2.8	1.1	0.4
SEG 10 HS	34	33	29	25	22	18	15	9	6	3
SEG 15 HS	69	64	60	53	43	36	30	22	16	8
SEG 20 HS	124	116	104	92	78	64	48	32	23	10
SEG 20 LS	170	155	138	100	75	46	8	-	-	-
SEG 25 HS	184	180	170	146	120	96	72	47	28	13
SEG 25 LS	260	248	233	182	121	62	28	-	-	-
SEG 30 HS	240	225	215	198	165	130	100	64	36	16
SEG 30 LS	370	345	315	242	173	102	80	-	-	-

Evacuation time in s/l for various vacuum ranges

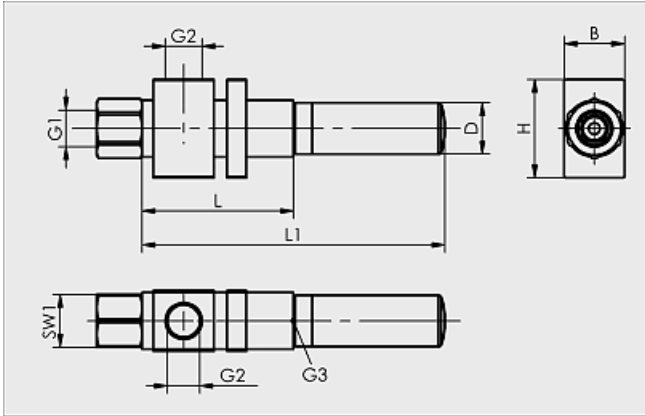
Type	Degree of evacuation in mbar								
	-50	-100	-200	-300	-400	-500	-600	-700	-800
SEG 05 HS-S	0.34	0.76	1.80	3.02	4.55	6.57	9.58	14.80	22.40
SEG 07-HS-S	0.17	0.36	0.85	1.45	2.18	3.25	4.67	7.34	14.60
SEG 07 HS	0.17	0.36	0.85	1.45	2.18	3.25	4.67	7.34	14.60
SEG 10 HS	0.09	0.16	0.34	0.59	0.96	1.42	2.03	3.30	7.36
SEG 15 HS	0.05	0.07	0.19	0.31	0.48	0.72	1.12	1.70	3.60
SEG 20 HS	0.03	0.05	0.11	0.16	0.24	0.35	0.50	1.08	1.65
SEG 20 LS	0.01	0.04	0.11	0.18	0.33	0.60	1.70	-	-
SEG 25 HS	0.01	0.03	0.06	0.09	0.14	0.20	0.30	0.49	1.10
SEG 25 LS	0.01	0.03	0.08	0.15	0.26	0.50	0.83	-	-
SEG 30 HS	0.01	0.02	0.04	0.06	0.10	0.15	0.21	0.42	0.80
SEG 30 LS	0.01	0.03	0.06	0.12	0.20	0.38	-	-	-

Basic ejectors

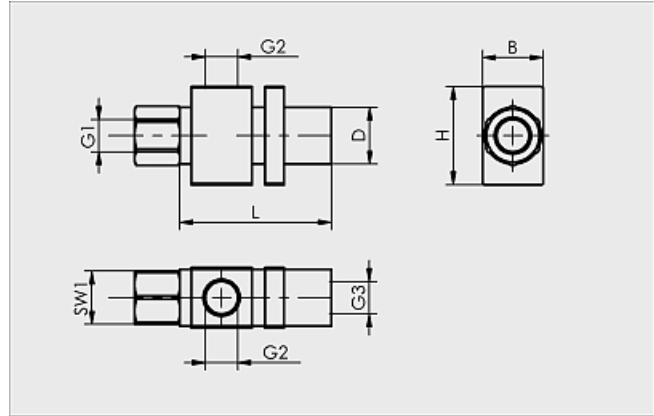
Basic ejectors SEG



Design data Basic ejectors SEG



SEG 05 to 30 SDA



SEG 05 to 30

Type	Dimensions in mm								
	B	D	G1	G2	G3	H	L	L1	SW1
SEG 05 HS-S	10	7,0	M5-F	M5-F	M5-F	20	32	-	8
SEG 05 HS-S SDA	10	9,0	M5-F	M5-F	M5-F	20	32	56	8
SEG 07 HS-S	10	7,0	M5-F	M5-F	M5-F	20	32	-	8
SEG 07 HS-S SDA	10	9,0	M5-F	M5-F	M5-F	20	32	56	8
SEG 07 HS	16	16,0	G1/8-F	G1/8-F	G1/8-F	26	40	-	14
SEG 07 HS SDA	16	13,6	G1/8-F	G1/8-F	G1/8-F	26	40	80	14
SEG 10 HS	16	16,0	G1/8-F	G1/8-F	G1/8-F	26	45	-	14
SEG 10 HS SDA	16	13,6	G1/8-F	G1/8-F	G1/8-F	26	45	85	14
SEG 15 HS	22	21,0	G1/4-F	G1/4-F	G1/4-F	38	60	-	17
SEG 15 HS SDA	22	20,0	G1/4-F	G1/4-F	G1/4-F	38	60	106	17
SEG 20 HS	26	25,0	G1/4-F	G1/4-F	G3/8-F	38	75	-	17
SEG 20 HS SDA	26	20,0	G1/4-F	G1/4-F	G3/8-F	38	75	131	17
SEG 20 LS	26	25,0	G1/4-F	G1/4-F	G3/8-F	38	75	-	17
SEG 20 LS SDA	26	20,0	G1/4-F	G1/4-F	G3/8-F	38	75	131	17
SEG 25 HS	32	30,0	G3/8-F	G1/2-F	G1/2-F	50	100	-	22
SEG 25 HS SDA	32	27,0	G3/8-F	G1/2-F	G1/2-F	50	100	163	22
SEG 25 LS	32	30,0	G3/8-F	G1/2-F	G1/2-F	50	100	-	22
SEG 25 LS SDA	32	27,0	G3/8-F	G1/2-F	G1/2-F	50	100	163	22
SEG 30 HS	42	40,0	G3/8-F	G1/2-F	G3/4-F	50	110	-	22
SEG 30 HS SDA	42	31,0	G3/8-F	G1/2-F	G3/4-F	50	110	200	22
SEG 30 LS	42	40,0	G3/8-F	G1/2-F	G3/4-F	50	110	-	22
SEG 30 LS SDA	42	31,0	G3/8-F	G1/2-F	G3/4-F	50	110	200	22