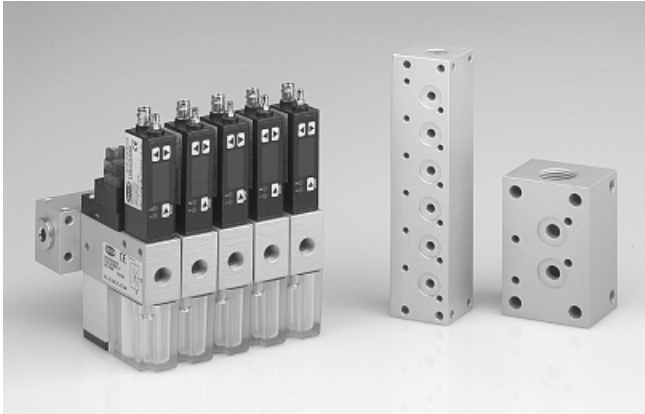


Compact ejectors

SCP compressed-air manifold GP



Compressed-air manifold for compact ejectors

Our highlights...

- Baseplate for the construction of blocks of compact ejectors
- Central compressed-air inlet

Your advantages...

- > Space-saving construction of ejector blocks
- > Low installation costs

Applications

- Mounting of compact ejectors in blocks
- Customer-specific solutions are possible

Construction

- Baseplate made of anodized aluminum for mounting of several compact ejectors
- Central compressed-air inlet and extension at any time
- Connections not needed for ejectors can be sealed with cover plates
- Delivered complete with gaskets and installation material

Suitability for branch-specific applications



Ordering data SCP compressed-air manifold GP

Type	Type*	Article No.
Compressed-air connection plate	GP 2 SCP 10..15	10.02.02.00912
Compressed-air connection plate	GP 3 SCP 10..15	10.02.02.00913
Compressed-air connection plate	GP 4 SCP 10..15	10.02.02.00914
Compressed-air connection plate	GP 5 SCP 10..15	10.02.02.00915
Compressed-air connection plate	GP 6 SCP 10..15	10.02.02.00916
Ejector blanking plate	EJEK-PL SCP 10..15	10.02.02.00729
Compressed-air connection plate	GP 2 SMP 15..30/SCP 20..30	10.02.02.00917
Compressed-air connection plate	GP 3 SMP 15..25/SCP 20..25	10.02.02.00918
Compressed-air connection plate	GP 4 SMP 15..20/SCP 20	10.02.02.00919
Ejector blanking plate	EJEK-PL SMP 15..30/SCP 20..30	10.02.02.00728

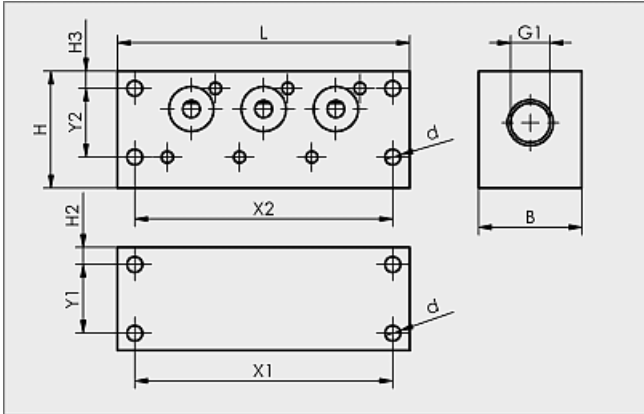
*EJEK-PL = Plate for covering unused connections

Compact ejectors

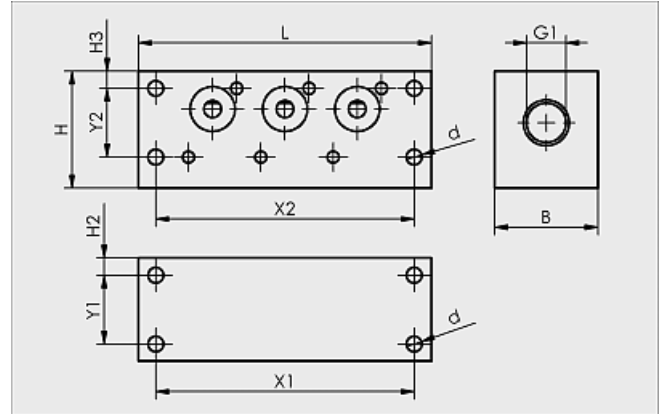
SCP compressed-air manifold GP



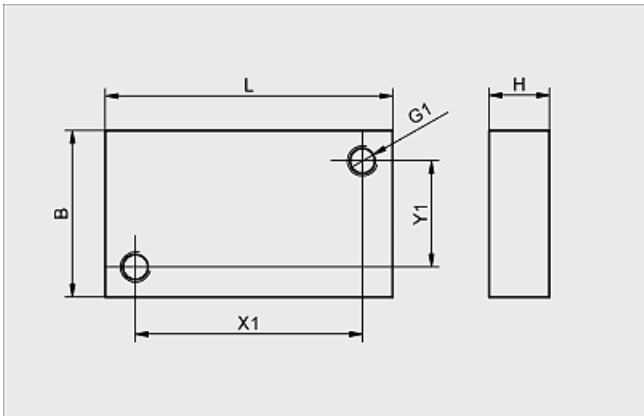
Design data SCP compressed-air manifold GP



Compressed-air manifold GP SCP10..15



Compressed-air manifold GP SMP15..30/SCP



Ejector blanking plate EJEK-PL ...

Type	Dimensions in mm												Number of outputs	Weight [g]
	B	d	G1	H	H2	H3	L	X1	X2	Y1	Y2			
GP 2 SCP 10..15	30	4,5	G1/4-F	34,0	-	5	64	54	54	20	20	2	180	
GP 3 SCP 10..15	30	4,5	G1/4-F	34,0	-	5	85	75	75	20	20	3	223	
GP 4 SCP 10..15	30	4,5	G1/4-F	34,0	-	5	106	96	96	20	20	4	281	
GP 5 SCP 10..15	30	4,5	G1/4-F	34,0	-	5	127	117	117	20	20	5	333	
GP 6 SCP 10..15	30	4,5	G1/4-F	34,0	-	5	148	138	138	20	20	6	388	
EJEK-PL SCP 10..15	20	-	-	6,0	7	8	26	20	20	-	34	-	9	
GP 2 SMP 15..30/SCP 20..30	38	7,0	G1/2-F	49,5	7	8	78	62	62	-	34	2	375	
GP 3 SMP 15..25/SCP 20..25	38	7,0	G1/2-F	49,5	7	8	101	85	85	-	34	3	481	
GP 4 SMP 15..20/SCP 20	38	7,0	G1/2-F	49,5	7	8	124	108	108	-	34	4	595	
EJEK-PL SMP 15..30/SCP 20..30	22	-	-	8,0	7	8	38	30	-	14	-	-	17	