

# Floating suction pads

## Floating suction pads SBS



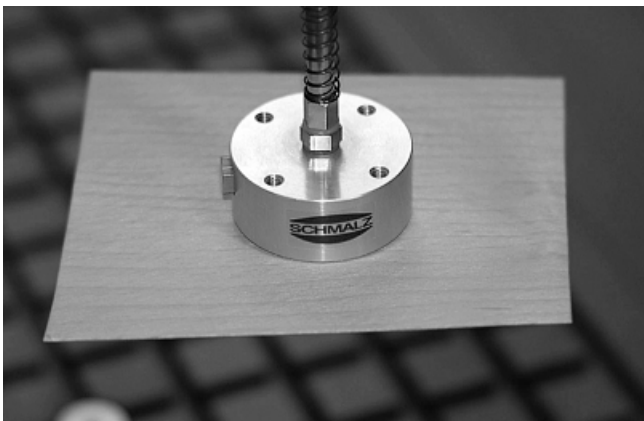
Floating suction pad SBS

### Our highlights...

- Integrated vacuum generation on the Bernoulli principle
- Suction pad "floats" on an air cushion
- High volume flow rate at a low vacuum
- No air is drawn in through the workpiece

### Your advantages...

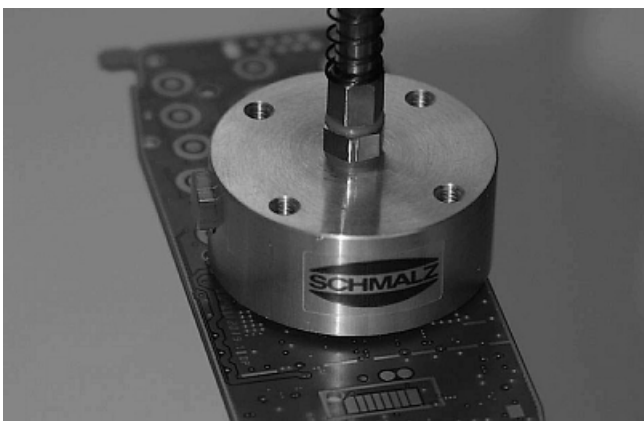
- > Operates without an ejector; needs only compressed air
- > Low-contact handling, particularly suitable for very sensitive workpieces
- > Very good compensation for leaks; little deformation of the workpiece
- > Reliable separation of thin, porous workpieces



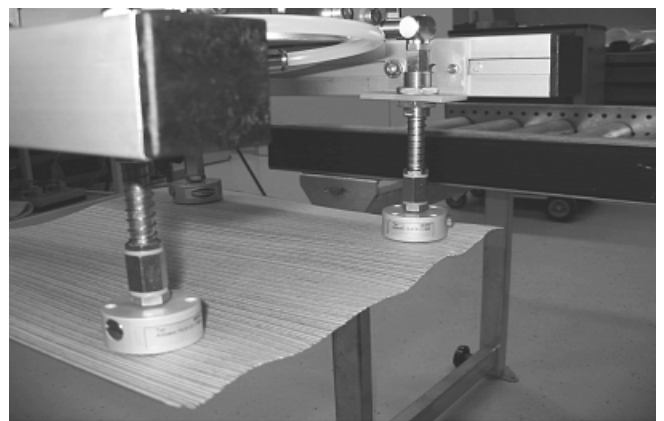
Low-contact handling of thin wood veneer with the floating suction pad SBS

### Applications

- Handling of easily-damaged workpieces such as wafers and printed circuit boards
- Handling and separation of extremely thin workpieces (film, paper, wood veneer, etc.) without permanent deformation
- Handling of very porous workpieces (such as printed circuit boards with no components installed)



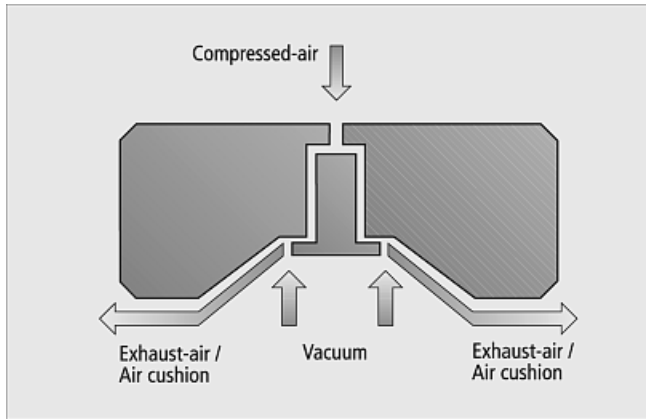
Floating suction pad SBS for the careful handling of easily damaged printed circuit boards



Low-contact handling of thin wood veneer with the floating suction pad SBS

# Floating suction pads

## Floating suction pads SBS



Bernoulli-principle

### Construction

- Anodized aluminum body with integrated Bernoulli nozzle
- Vertical and horizontal compressed-air connections
- Three elastomer studs on the bottom of the suction pad accept lateral forces
- Can be mounted directly with a spring plunger or with four connection threads



### Suitability for branch-specific applications

#### Designation code Floating suction pads SBS

Short designation	Diameter in mm	Connection thread
Example: SBS	20	M5-IG
SBS	20 30 40 60	M5-IG (IG = female)

#### Ordering data Floating suction pads SBS

Type	Article No.
SBS 20 M5-IG	10.01.01.11746
SBS 30 M5-IG	10.01.01.11747
SBS 40 M5-IG	10.01.01.11624
SBS 60 M5-IG	10.01.01.11646

#### Ordering data spare parts Floating suction pads SBS

Type	Rubber buffer
SBS 20 M5-IG	10.01.01.11766
SBS 30 M5-IG	10.01.01.11766
SBS 40 M5-IG	10.01.01.11767
SBS 60 M5-IG	10.01.01.11767

# Floating suction pads

## Floating suction pads SBS

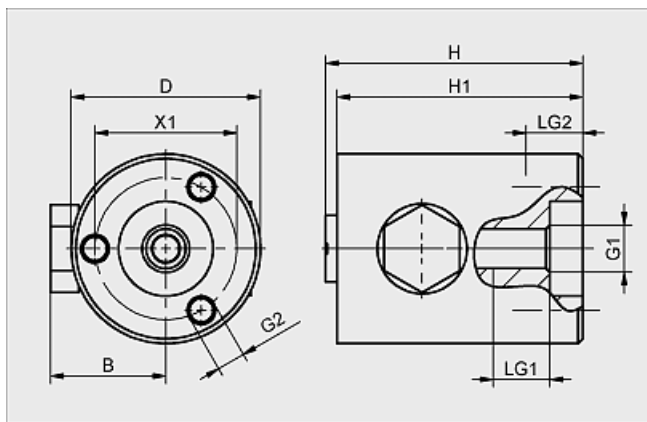


### Technical data Floating suction pads SBS

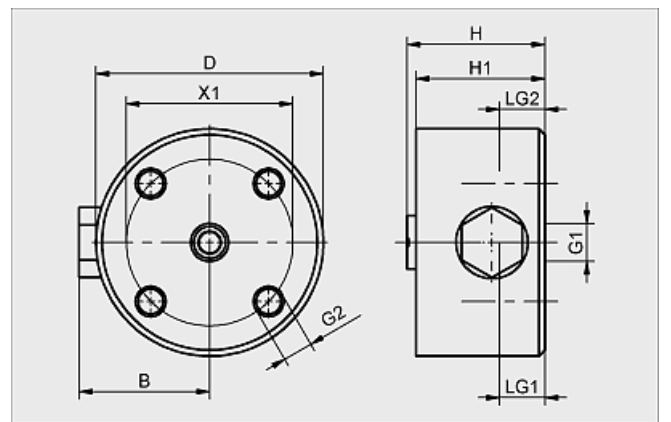
Type	Holding force [N]*	Lateral force [N]*	Air consumption [m <sup>3</sup> /h]	Air consumption [l/min]	Operating pressure [bar]	Weight [g]
SBS 20 M5-IG	1,5	1,0	6,0	100	2...7	24
SBS 30 M5-IG	2,5	1,5	6,0	100	2...7	34
SBS 40 M5-IG	4,0	3,0	6,6	110	2...7	55
SBS 60 M5-IG	7,5	5,0	12,3	205	2...7	125

\*The specified values are valid for a operating pressure of 5 bar

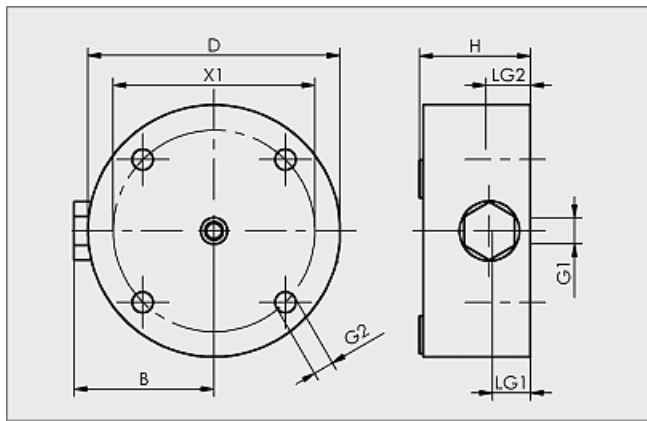
### Design data Floating suction pads SBS



SBS 20 M5-IG



SBS 30 M5-IG



SBS 40 to SBS 60

Type	Dimensions in mm								
	B	D	G1	G2	H	H1	LG1	LG2	X1
SBS 20 M5-IG	12,2	20	M5-F	M3-F	27	26	6	6	15
SBS 30 M5-IG	17,2	30	M5-F	M4-F	18	17	6	6	22
SBS 40 M5-IG	22,2	40	M5-F	M4-F	17	-	5	5	32
SBS 60 M5-IG	32,2	60	M5-F	M4-F	17	-	5	5	45