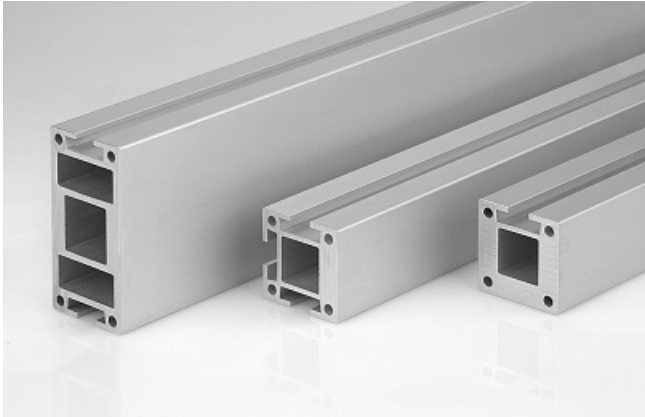


Sections and connectors

Mounting sections MO-PROF



Mounting sections MO-PROF

Our highlights...

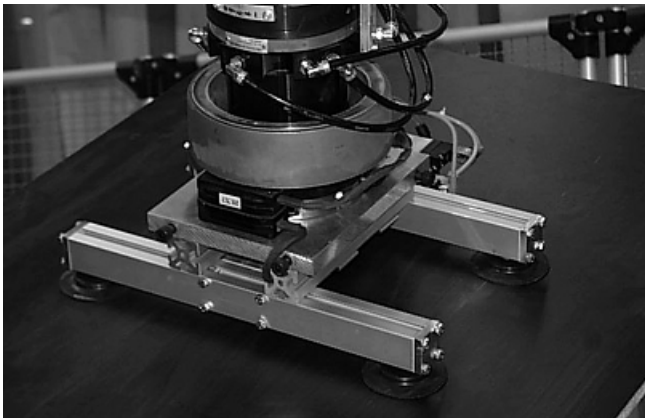
- Vacuum-tight hollow section with internal chambers
- Suction pads can be screwed directly into the sections
- Sections with grooved sides
- High-strength extruded aluminium sections
- Wide range of accessories such as corner connectors, sealing plates, etc.

Your advantages...

- > Vacuum/compressed air can be carried directly in the sections
- > Hose-free, integrated vacuum distribution from a central connection to the individual suction pads
- > Simple attachment of mounting elements such as holders and plungers
- > Low weight combined with high strength and maximum precision
- > Complete modular system for the flexible construction of load cross-beams

Applications

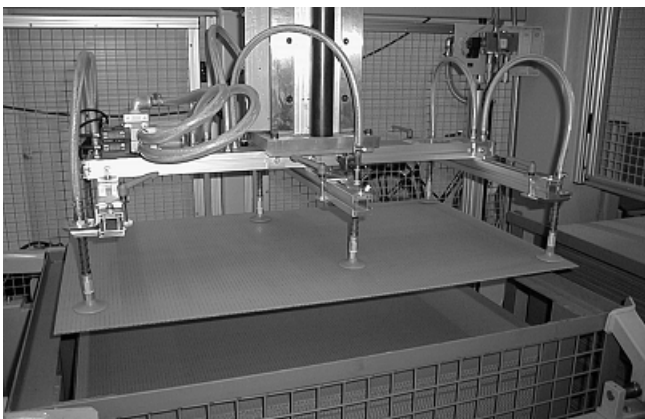
- For flexible construction of tailor-made load cross-beams
- Acts as combined load cross-beam and vacuum distributor
- Three-chamber section permits distribution of different vacuum and compressed-air pressures



Vacuum spider with modular construction from aluminium sections

Construction

- Hollow extruded aluminium sections
- 40 x 40 mm section with one chamber and optionally with one or three grooves on the sides
- 80 x 40 mm section with three chambers and two grooves on the sides
- Holes and slots at the ends for assembly with the aid of elbow and corner connectors, sealing plates and other accessories



Vacuum spider constructed from aluminium sections for handling cardboard boxes

Sections and connectors

Mounting sections MO-PROF



Suitability for branch-specific applications

Designation code Mounting sections MO-PROF

Short designation	Dimensions	Shape
Example: MO-PROF	40x40	1TN
MO-PROF	40x40 80x40	1TN...1-Nut 2TN...2-Nut 3TN...3-Nut

Ordering data Mounting sections MO-PROF

Type	Article No.
MO-PROF 40x40 1TN	26.07.01.00023
MO-PROF 40x40 3TN	26.07.01.00022
MO-PROF 80x40 2TN	26.07.01.00021

Technical data Mounting sections MO-PROF

Type	Area [cm ²]	Resistance moment W _x [cm ³]	Resistance moment W _y [cm ³]	Area moment I _x [cm ⁴]	Area moment I _y [cm ⁴]	Mass [kg/m]	Warping (max) [mm/m]	Material
MO-PROF 40x40 1TN	9,1	6,9	9,6	13,7	17,0	2,5	0,8	Al Mg Si 0.5 F22
MO-PROF 40x40 3TN	6,5	5,5	5,2	12,7	10,4	1,8	0,8	Al Mg Si 0.5 F22
MO-PROF 80x40 2TN	12,1	14,0	19,3	28,1	77,2	3,3	0,8	Al Mg Si 0.5 F22

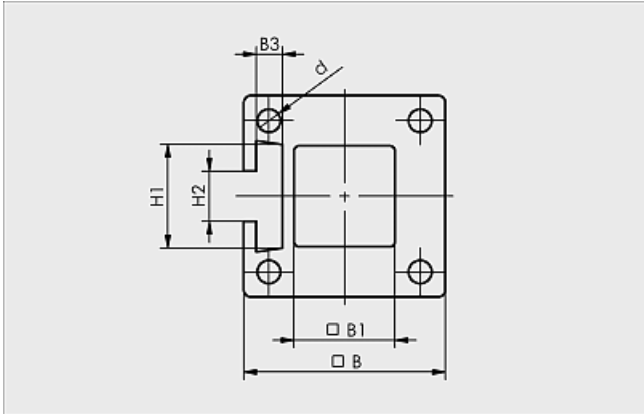
4 Mounting elements

Sections and connectors

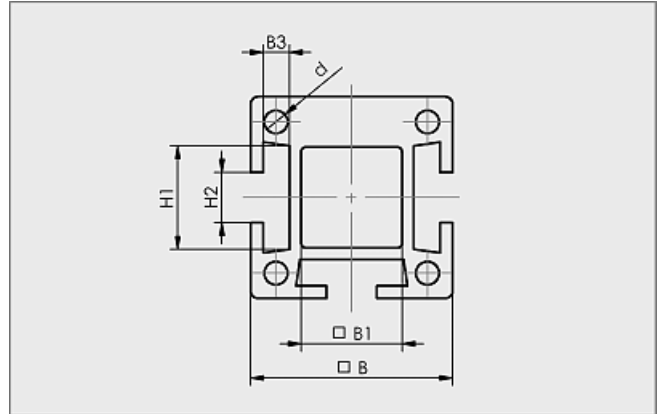
Mounting sections MO-PROF



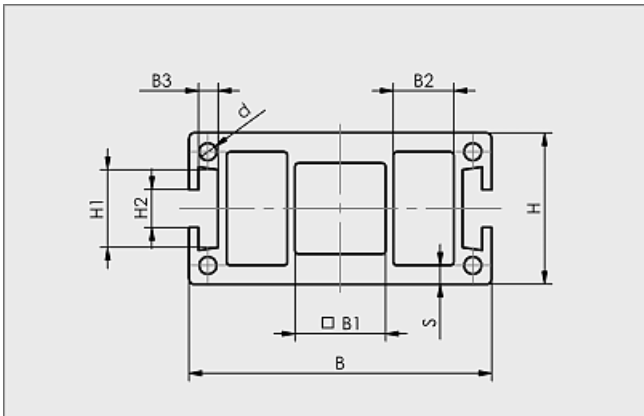
Design data Mounting sections MO-PROF



MO-PROF 40 x 40 1TN



MO-PROF 40 x 40 3TN



MO-PROF 80 x 40 2TN

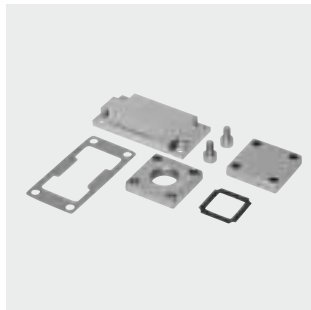
Type	Dimensions in mm								
	B	B1	B2	B3	d	H	H1	H2	s
MO-PROF 40x40 1TN	40	20	-	5,2	4,6	40	20,5	10	-
MO-PROF 40x40 3TN	40	20	-	5,2	4,6	40	20,5	10	-
MO-PROF 80x40 2TN	80	24	14,3	5,2	4,6	40	20,5	10	4

Suction pad mounting elements



Sections / section connectors / accessories

Accessories for aluminium sections



Sealing plate

Sealing plate 40 x 40/80 x 40 with sealing ring for sealing the ends of sections.



Application example

Complete gripper unit constructed from the modular system, including vacuum generator with integrated functions.



Section connector

Cross-plate as an additional reinforcing element for section nodes. Material: steel, 3 mm, nickel-plated.



Slot blocks

Flat slot blocks M6 and M8 for flange-mounting of further components, M6 with collar, M8 with collar, with very good guidance in the slot of the section, suitable for later installation. Material: steel, nickel-plated.



Section connector

Node plate as an additional reinforcing element for angled section connections. Material: steel, 3 mm, nickel-plated.



Section connector

Corner connector for sections, suitable for the construction of vacuum grippers with integrated vacuum ducts (suitable for sections 40 x 40-1 x slot and 40 x 40-3 x slot). Material: aluminium with holes large enough for vacuum passage. Also required: 8 connecting screws DIN 912, M6 x 20, gasket 40 x 40.



Mounting bracket

Mounting bracket as an additional reinforcing element for angled section connections. Material: steel, 5 mm, nickel-plated.



Drilling template

Drilling template for construction of T-connections with sections 40 x 40-1 x slot. Material: steel, with drilling sleeves for the precise mounting of a T-connection with sections 40 x 40-1 x slot. Also required: 4 connecting screws DIN 912, M6 x 55, gasket 40 x 40.

Mounting elements
4

Sections and connectors

Mounting-section accessories

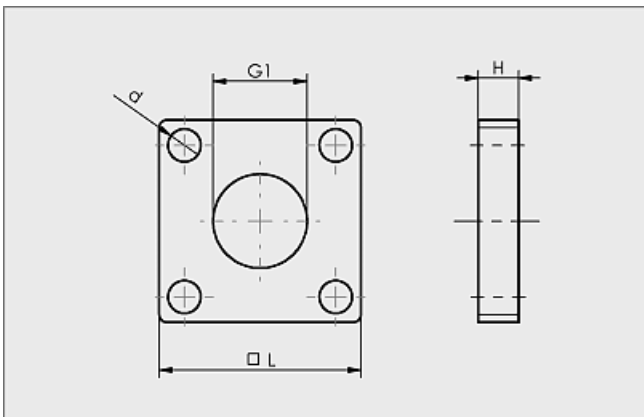


Ordering data Mounting-section accessories

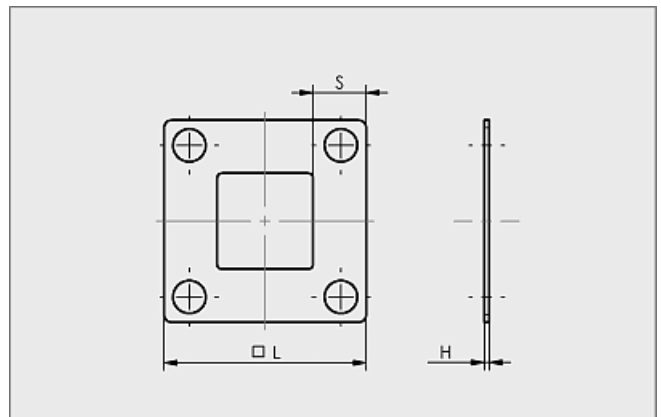
Type	Type	Article No.
Sealing plate	VRS-PL-40 MO-PROF	25.09.06.00008
Sealing plate	VRS-PL-40 G1/2-IG MO-PROF	25.09.06.00009
Sealing frame	DI-RA 40x40x1 MO-PROF	10.07.08.00131
Sealing plate	VRS-PL-80x40 MO-PROF	25.09.06.00001
Sealing plate	VRS-PL-80x40 G1/2-IG MO-PROF	25.09.06.00010
Sealing frame	DI-RA 80x40x1 MO-PROF	10.07.08.00132
Raised countersunk screw	SCHR WN1552 5x20	20.10.03.00008
Section connector	VBR-PR 185x185x3 K-FL	25.09.06.00005
Section connector	VBR-PR 150x3 E-FL	25.09.06.00006
Section connector	VBR-PR 55x40 E-V	10.08.03.00099
Mounting bracket	BEF-WIN 40x40x40 5	25.09.06.00007
Sliding block	NUT-STEI 20x10 M6-IG	25.09.06.00002
Sliding block	NUT-STEI 20x10 M8-IG	25.09.06.00003
Sliding block	NUT-STEI 20x20 M8-IG	25.09.06.00012



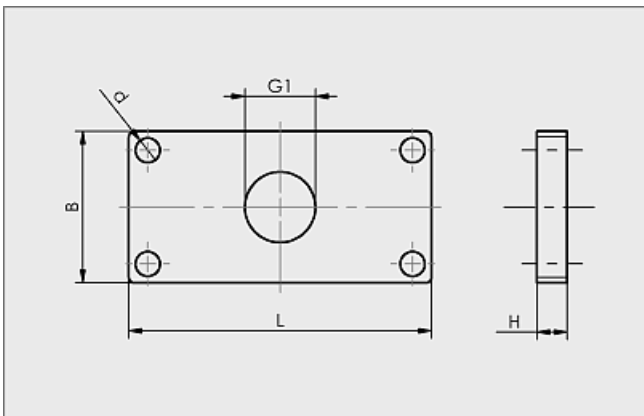
Design data Mounting-section accessories



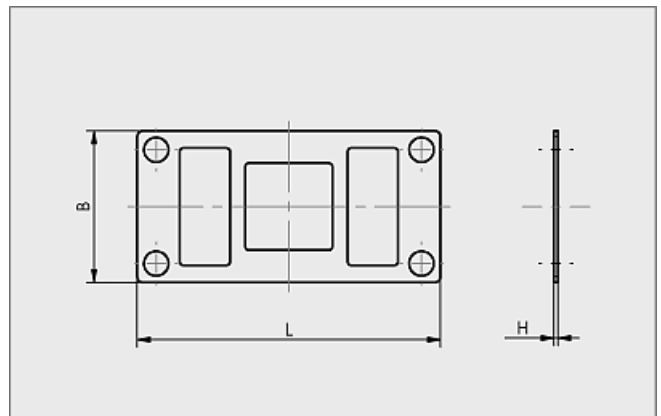
Sealing plate VRS-PL 40 x 40 (G1/2-IG) MO-PROF



Sealing frame DI-RA 40 x 40



Sealing plate VRS-PL 80 x 40 (G1/2-IG) MO-PROF



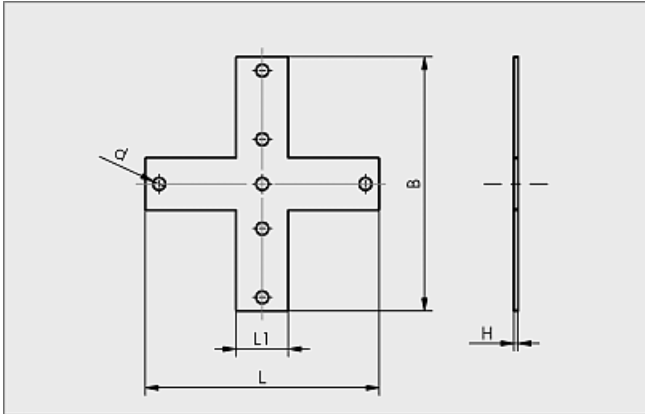
Sealing frame DI-RA 80 x 40

Sections and connectors

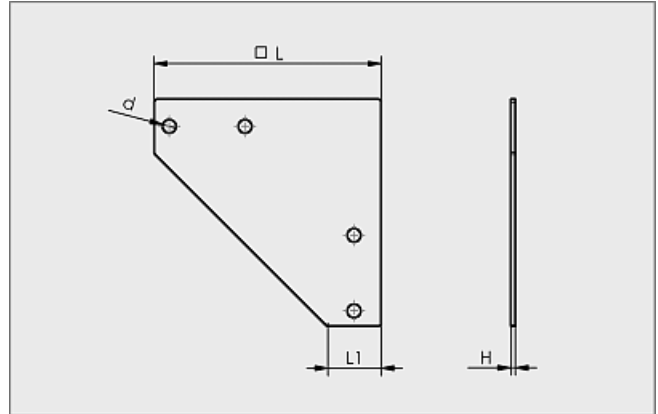
Mounting-section accessories



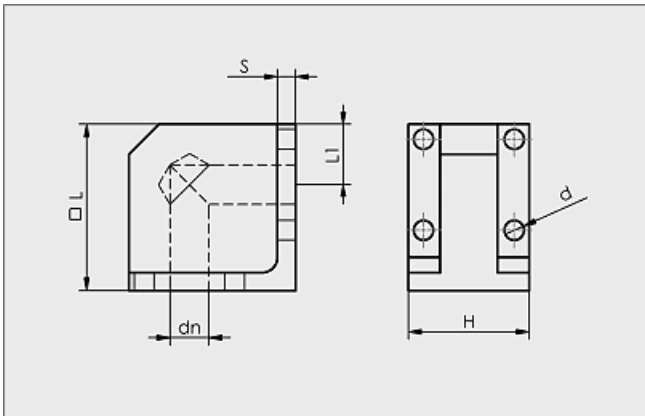
Design data Mounting-section accessories



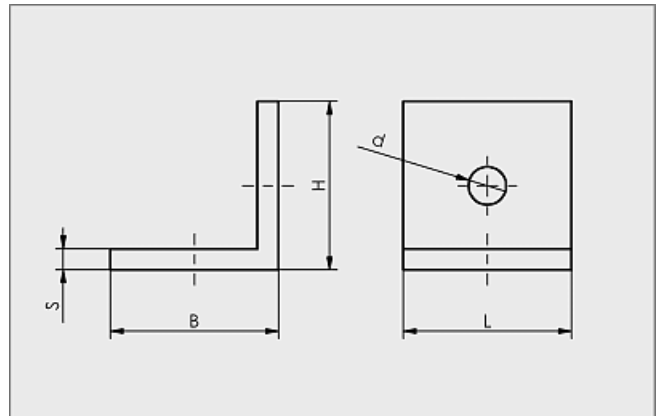
Section connector VBR-PR 185 x 185 K-FL



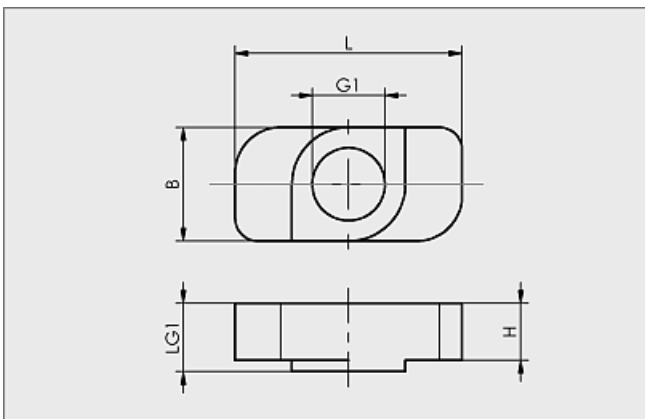
Section connector VBR-PR 150 x 150 E-FL



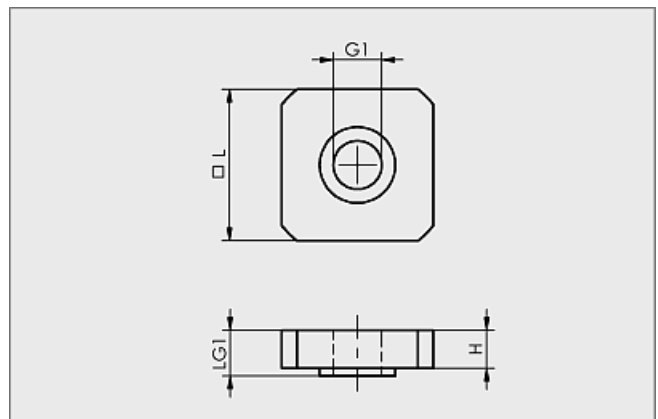
Section connector VBR-PR 55 x 40 E-V



Mounting bracket BEF-WIN 40 x 40 x 5



Sliding block NUT-STEI 20 x 10 M6-IG/ M8-IG



Sliding block NUT-STEI 20 x 20 M8-IG

Mounting elements
4

Sections and connectors

Mounting-section accessories



Design data Mounting-section accessories

Type	Dimensions in mm									
	Type	B	d	dn	G1	H	L	L1	LG1	s
Sealing plate	VRS-PL-40 MO-PROF	-	6,5	-	-	4,0	40	-	-	-
Sealing plate	VRS-PL-40 G1/2-IG MO-PROF	-	6,5	-	G1/2"-F	8,0	40	-	-	-
Sealing frame	DI-RA 40x40x1 MO-PROF	40	-	-	-	1,0	40	-	-	10,5
Sealing plate	VRS-PL-80x40 MO-PROF	40	6,5	-	-	8,0	80	-	-	-
Sealing plate	VRS-PL-80x40 G1/2-IG MO-PROF	40	6,5	-	G1/2"-F	8,0	80	-	-	-
Sealing frame	DI-RA 80x40x1 MO-PROF	40	-	-	-	1,0	80	-	-	-
Raised countersunk screw	SCHR WN1552 5x20	-	-	-	-	-	20	-	-	-
Section connector	VBR-PR 185x185x3 K-FL	185	9,0	-	-	3,0	185	38	-	-
Section connector	VBR-PR 150x3 E-FL	-	9,0	-	-	3,0	150	36	-	-
Section connector	VBR-PR 55x40 E-V	-	6,5	13,0	-	40,0	55	20	-	6,0
Mounting bracket	BEF-WIN 40x40x40 5	40	9,0	-	-	40,0	40	-	-	5,0
Sliding block	NUT-STEI 20x10 M6-IG	10	-	-	M6-F	5,0	20	-	6	-
Sliding block	NUT-STEI 20x10 M8-IG	10	-	-	M8-F	5,0	20	-	6	-
Sliding block	NUT-STEI 20x20 M8-IG	20	-	-	M8-F	4,9	20	-	6	-