

# Solenoid valves

## Solenoid valves EMVP



Solenoid valve EMVP with venting filter

### Our highlights...

- Pilot control with compressed air (p = 5 bar)
- Wide range of nominal diameters
- 3/2-way valve
- Switching function NO

### Your advantages...

- >Extremely short opening and closing times
- >Also suitable for high volume flow rates
- >Control of vacuum on/off or venting functions
- >Safety in the case of a power failure

### Applications

- Control at high nominal flow rates
- Vacuum on/off and venting functions possible
- NO function ensures the workpiece is held even in the case of a power failure
- For handling tasks with very short switching times
- Suitable for use with filtered air

### Construction

- Solenoid valve with pneumatic pilot control
- Seat valve in aluminum housing (EMVP-32 and EMVP-50: plastic housing)
- Degree of protection IP 65
- Connection socket complies with DIN 43 650, Form A
- Supplied complete with plug connector and (for DC operation) with quenching diode

### Suitability for branch-specific applications



Valve technology

6

### Ordering data Solenoid valves EMVP

Type	Operating voltage	
	230V-AC	24V-DC
EMVP 10	10.05.02.00070	10.05.02.00064
EMVP 15	10.05.02.00071	10.05.02.00049
EMVP 19	10.05.02.00072	10.05.02.00048
EMVP 25	10.05.02.00073	10.05.02.00067
EMVP 32	10.05.02.00074	10.05.02.00068
EMVP 50	10.05.02.00075	10.05.02.00069

### Ordering data accessories Solenoid valves EMVP

Type	Venting filter with mounting kit
EMVP 10	10.05.01.00065
EMVP 15	10.05.01.00061
EMVP 19	10.05.01.00062
EMVP 25	10.05.01.00063
EMVP 32	10.05.01.00062
EMVP 50	10.05.01.00064

# Solenoid valves

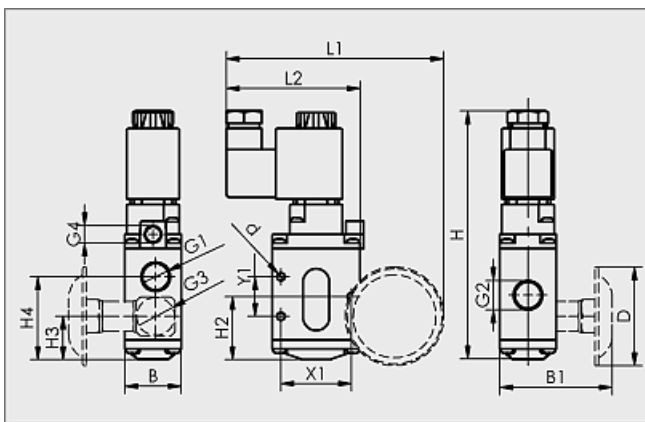
## Solenoid valves EMVP



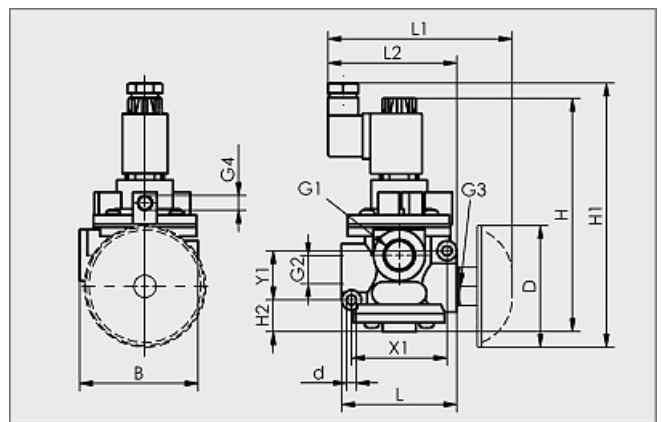
### Technical data Solenoid valves EMVP

Type	Nominal size [mm]	Principle of operation	Nominal flow rate [m³/h]	Nominal flow rate [l/min]	Power consumption DC [W]	Closing time [ms]	Weight [kg]
EMVP 10	10	Optionally NO/NC	10	167	11	30	0,93
EMVP 15	15	Optionally NO/NC	20	333	11	40	1,62
EMVP 19	19	Optionally NO/NC	35	583	11	50	1,61
EMVP 25	25	Optionally NO/NC	90	1500	11	100	2,14
EMVP 32	32	Normally open	130	2167	5	300	0,50
EMVP 50	50	Normally open	310	5167	5	500	1,36

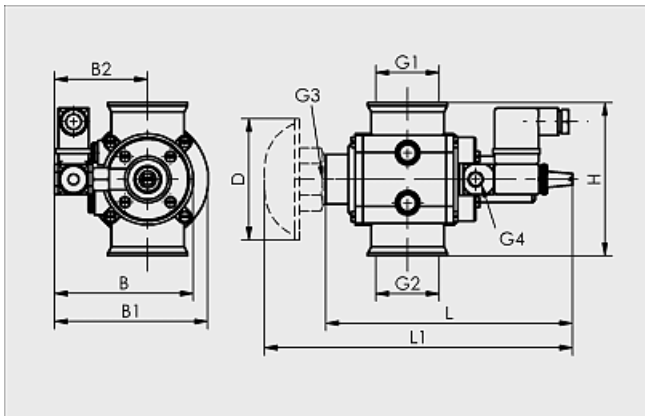
### Design data Solenoid valves EMVP



EMVP 10



EMVP 15 to 25



EMVP 32 and 50

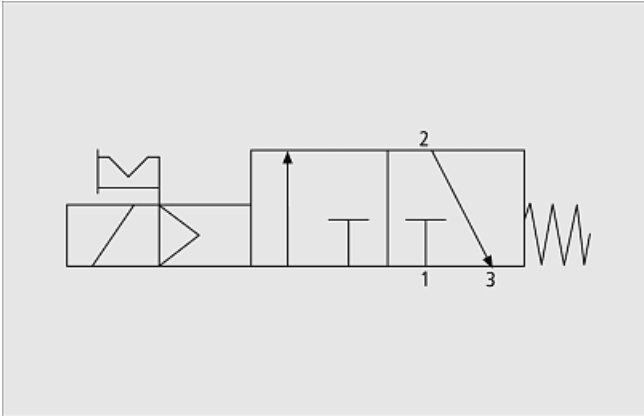
Type	Dimensions in mm																		
	B	B1	B2	d	D	G1	G2	G3	G4	H	H1	H2	H3	H4	L	L1	L2	X1	Y1
EMVP 10	32,0	64	-	4,5	56	G3/8-F	G3/8-F	G3/8-F	G1/8-F	141	-	36	24,5	47	-	124	81	40	23
EMVP 15	85,0	-	-	6,5	80	G1/2-F	G1/2-F	G1/2-F	G1/8-F	154	174,0	21	-	-	78,5	122	89	63	33
EMVP 19	85,0	-	-	6,5	80	G3/4-F	G3/4-F	G3/4-F	G1/8-F	154	174,0	21	-	-	78,5	120	89	63	33
EMVP 25	90,0	-	-	8,5	80	G1-F	G1-F	G1-F	G1/8-F	174	186,5	21	-	-	101,0	123	98	76	37
EMVP 32	90,5	101	61,5	-	80	G1-1/4-F	G1-1/4-F	G3/4-F	G1/8-F	101	-	-	-	-	163,0	204	-	-	-
EMVP 50	114,0	151	105,5	-	80	G2-F	G2-F	G1-1/4-F	G1/8-F	142	-	-	-	-	225,0	260	-	-	-

# Solenoid valves

Solenoid valves EMVP



## Functional circuit diagram Solenoid valves EMVP



EMVP 10 to 50