

# Hoses and connectors



## Screw unions with union nut EIV-GE, EIV-W



Unions with union nuts EIV-GE, EIV-W

### Our highlights...

- Screw-in unions, straight (GE) or elbow (W) versions
- Made of high-strength aluminium

### Your advantages...

- >Secure and damage-free clamping of all smooth hoses with union nut; very flexible mounting possibilities
- >Long lifetime; reusable

### Applications

- For use as a connecting element for smooth hoses (including hoses with textile reinforcement)
- Hose is secured with a union nut



### Construction

- Screw-in unions made of high-strength anodised aluminum with Whitworth pipe thread
- Elbow version can be rotated endlessly

### Suitability for branch-specific applications

### Ordering data Screw unions with union nut EIV-GE, EIV-W

Type	Article No.
EIV-GE G1/4-AG 15-9	10.08.03.00043
EIV-GE G3/8-AG 15-9	10.08.03.00046
EIV-GE G3/8-AG 21-12	10.08.03.00047
EIV-GE G1/2-AG 15-9	10.08.03.00048
EIV-GE G1/2-AG 21-12	10.08.03.00049
EIV-W G1/4-AG 15-9	10.08.03.00052
EIV-W G3/8-AG 15-9	10.08.03.00053

### Technical data Screw unions with union nut EIV-GE, EIV-W

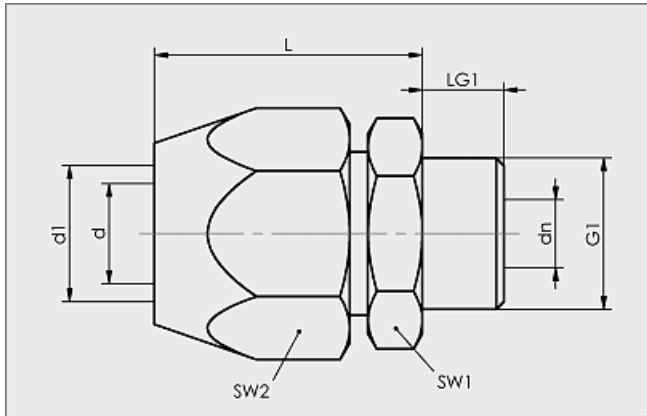
Type	Operating pressure [bar]	Operating temperature [°C]	Material
Screw-in unions	-0.95...10.0	-10...60	Aluminium

# Hoses and connectors

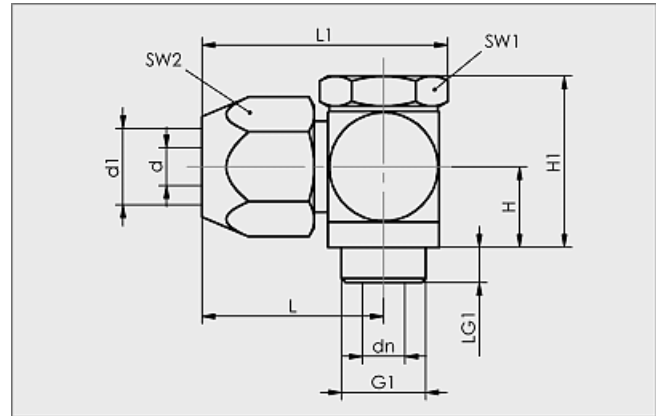


## Screw unions with union nut EIV-GE, EIV-W

### Design data Screw unions with union nut EIV-GE, EIV-W



Screw-in union EIV-GE



Screw-in union EIV-W

Type	Dimensions in mm										
	d	d1	dn	G1	H	H1	L	L1	LG1	SW1	SW2
EIV-GE G1/4-AG 15-9	10	16	7,5	G1/4"-M	-	-	29,5	-	9	22	24
EIV-GE G3/8-AG 15-9	10	16	7,5	G3/8"-M	-	-	29,5	-	9	22	24
EIV-GE G3/8-AG 21-12	12	22	9,0	G3/8"-M	-	-	32,0	-	9	27	30
EIV-GE G1/2-AG 15-9	10	16	7,5	G1/2"-M	-	-	29,5	-	11	24	24
EIV-GE G1/2-AG 21-12	12	22	9,0	G1/2"-M	-	-	32,0	-	11	27	30
EIV-W G1/4-AG 15-9	10	16	6,5	G1/4"-M	15,5	32	32,5	42,3	8	17	24
EIV-W G3/8-AG 15-9	10	16	7,5	G3/8"-M	15,5	33	35,0	47,5	8	22	24