

# Manually actuated valves

## Two-way ball valves KVZ



Ball cocks, two-way KVZ

### Our highlights...

- For use with vacuum and compressed air
- Wide range of nominal sizes
- Robust brass construction

### Your advantages...

- > Absolutely vacuum-tight: no leaks
- > Optimum matching to nominal flow rate
- > Robust and free of wear

### Applications

- Manual connection and disconnection of vacuum and compressed-air circuits or of individual suction pads
- For use in vacuum spiders and handling devices
- They may be installed in any orientation



### Construction

- Ball valve made of brass (body and ball)
- Teflon gaskets
- 2/2-way valve

### Suitability for branch-specific applications



### Ordering data Two-way ball valves KVZ

Type	Article No.
KVZ 8 2/2	10.05.08.00018
KVZ 20 2/2	10.05.08.00007
KVZ 32 2/2	10.05.08.00008
KVZ 50 2/2	10.05.08.00009



### Technical data Two-way ball valves KVZ

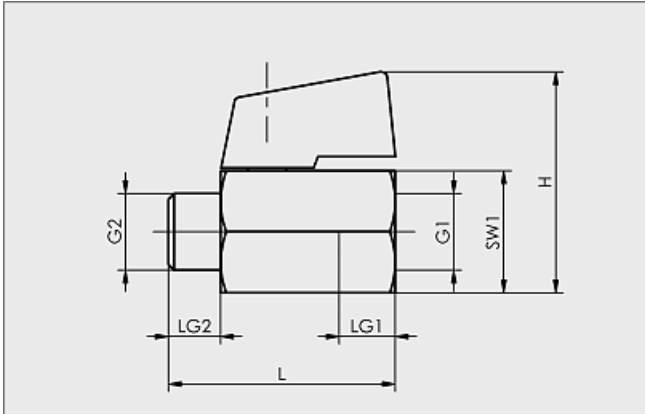
Type	Nominal size [mm]	Nominal flow rate [m³/h]	Nominal flow rate [l/min]	Work area [bar]	Weight [kg]
KVZ 8 2/2	8	10	167	-0.95...16.0	0,077
KVZ 20 2/2	20	45	750	-0.95...16.0	0,280
KVZ 32 2/2	32	100	1667	-0.95...16.0	0,700
KVZ 50 2/2	50	310	5167	-0.95...16.0	1,470

# Manually actuated valves

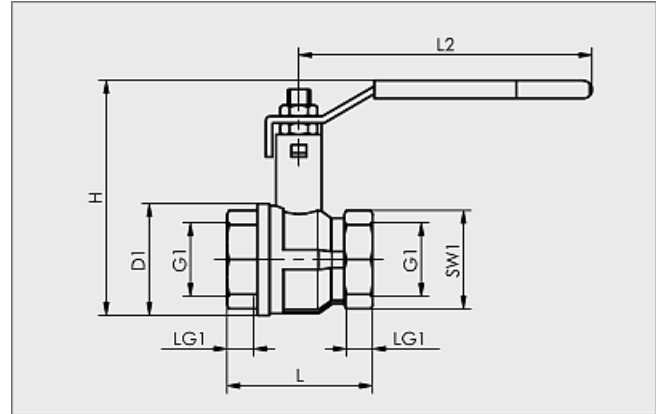
## Two-way ball valves KVZ



### Design data Two-way ball valves KVZ



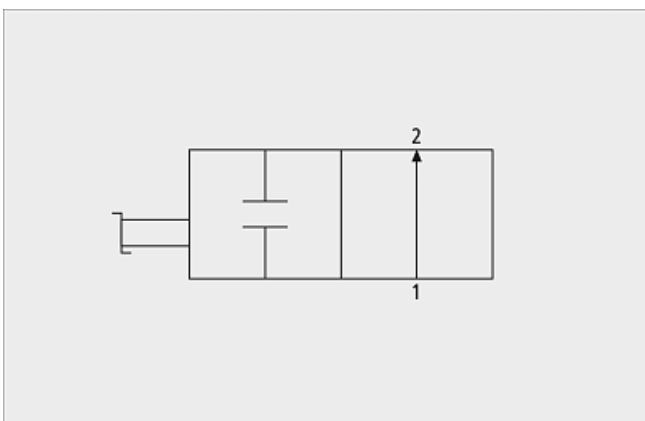
KVZ 8



KVZ 20 to 50

Type	Dimensions in mm								
	D1	G1	G2	H	L	L2	LG1	LG2	SW1
KVZ 8 2/2	-	G1/4"-F	G1/4"-M	38,0	39	-	10,5	9	21
KVZ 20 2/2	39	G3/4"-F	-	69,3	54	120	12,0	-	31
KVZ 32 2/2	59	G1-1/4"-F	-	124,2	77	155	15,5	-	48
KVZ 50 2/2	86	G2"-F	-	151,0	106	155	19,5	-	66

### Functional circuit diagram Two-way ball valves KVZ



Circuit diagram KVZ