

# Manually actuated valves

## Three-way ball valves KVD



Ball cocks, three-way KVD

### Our highlights...

- For use with vacuum and compressed air
- Wide range of nominal sizes
- Robust brass construction
- Venting function

### Your advantages...

- > Absolutely vacuum-tight: no leaks
- > Optimal matching to the nominal flow rate
- > Robust and free of wear
- > Venting function for quick release of parts

### Applications

- Manual connection and disconnection of vacuum and compressed-air circuits
- Activation and venting of individual suction pads
- For use in vacuum spiders and handling devices
- They may be installed in any orientation

### Construction

- Ball valve made of brass (body and ball)
- Teflon gaskets
- Aluminium handle
- 3/2-way valve



### Suitability for branch-specific applications



### Ordering data Three-way ball valves KVD

Type	Article No.
KVD 6 3/2	10.05.08.00001
KVD 10 3/2	10.05.08.00002
KVD 15 3/2	10.05.08.00003
KVD 20 3/2	10.05.08.00004
KVD 25 3/2	10.05.08.00005



### Technical data Three-way ball valves KVD

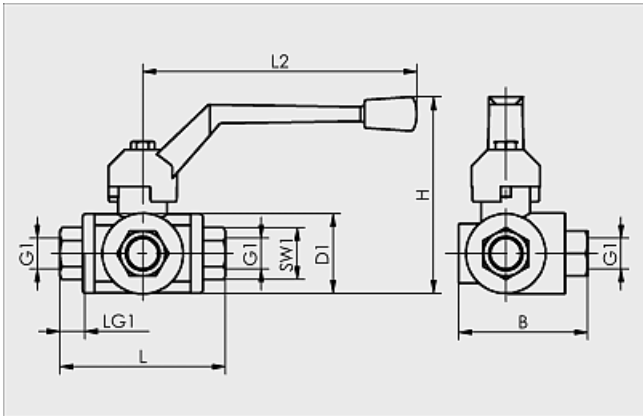
Type	Nominal size [mm]	Nominal flow rate [m <sup>3</sup> /h]	Nominal flow rate [l/min]	Work area [bar]	Weight [kg]
KVD 6 3/2	6	5	83	-0.95...16.0	0,081
KVD 10 3/2	10	15	250	-0.95...16.0	0,810
KVD 15 3/2	15	22	367	-0.95...16.0	0,810
KVD 20 3/2	20	45	750	-0.95...16.0	1,260
KVD 25 3/2	25	55	917	-0.95...16.0	1,930

# Manually actuated valves

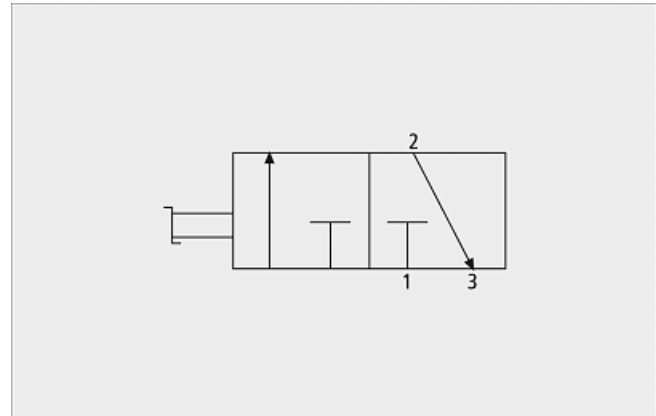
## Three-way ball valves KVD



### Design data Three-way ball valves KVD



KVD 6 to 25



Circuit diagram KVD

Type	Dimensions in mm							
	B	D1	G1	H	L	L2	LG1	SW1
KVD 6 3/2	63	39	G1/4"-F	95,7	81	134	13	22
KVD 10 3/2	63	39	G3/8"-F	95,7	81	134	13	22
KVD 15 3/2	63	39	G1/2"-F	95,7	81	134	13	29
KVD 20 3/2	74	47	G3/4"-F	118,8	92	170	15	34
KVD 25 3/2	85	54	G1"-F	142,0	108	210	17	41