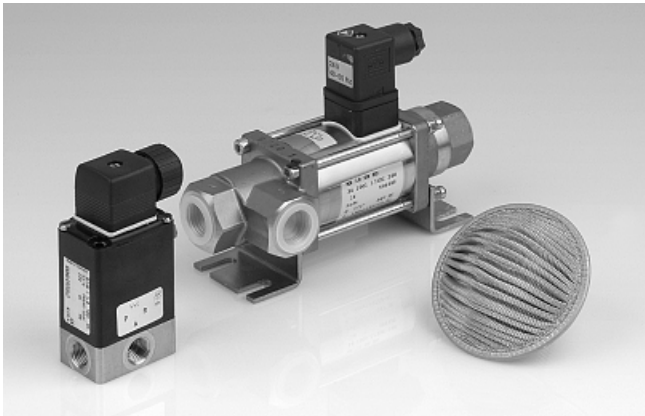


Solenoid valves

Solenoid valves EMV



Solenoid valve EMV with venting filter

Our highlights...

- Seat valve in robust metal housing
- Directly controlled
- 3/2-way valve (exception: EMV-3 is a 2/2-way valve)
- Switching function NO (exception: EMV-3 is NC)

Your advantages...

- > Suitable for vacuum and compressed air
- > Short opening and closing times
- > Control of on/off and venting functions
- > Safety in the case of a power failure



Solenoid valves EMV for control of vacuum in segments of a vacuum cross-beam

Applications

- Vacuum on/off, venting or blow-off functions possible
- Control of compressed air or vacuum in lines with smaller cross-sections
- NO function ensures workpiece is held even in the case of a power failure
- For handling tasks with short switching times
- Suitable for neutral gases

Construction

- Directly controlled solenoid valve
- Version EMV-3 always with NC switching function
- Seat valve in housing made of pressed brass 58 with seals
- Degree of protection IP 65
- Connection socket complies with DIN 43 650, Form A
- Supplied complete with plug connector and (for DC operation) a quenching diode

Suitability for branch-specific applications



Solenoid valves

Solenoid valves EMV



Ordering data Solenoid valves EMV

Type	Operating voltage	
	230V-AC	24V-DC
EMV 3	10.05.01.00067	10.05.01.00066
EMV 5	10.05.01.00069	10.05.01.00068
EMV 10	10.05.01.00071	10.05.01.00070
EMV 15	10.05.01.00073	10.05.01.00072
EMV 20	10.05.01.00075	10.05.01.00074
EMV 25	10.05.01.00077	10.05.01.00076

Ordering accessories data Solenoid valves EMV

Type	Venting filter with mounting kit
EMV 3	-
EMV 5	10.05.01.00060
EMV 10	10.05.01.00061
EMV 15	10.05.01.00062
EMV 20	10.05.01.00063
EMV 25	10.05.01.00064

Technical data Solenoid valves EMV

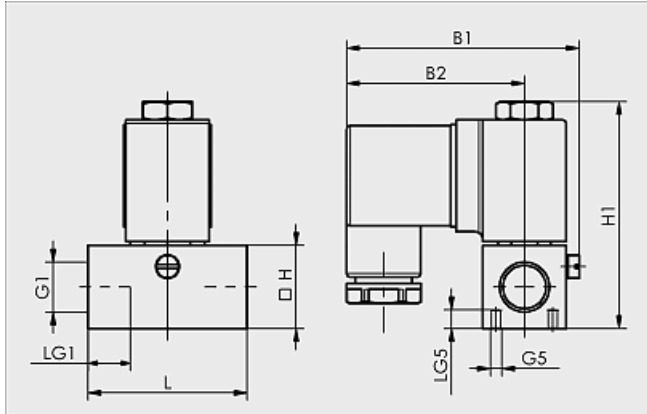
Type	Nominal size [mm]	Principle of operation	Nominal flow rate [m³/h]	Nominal flow rate [l/min]	Power consumption DC [W]	Closing time [ms]	Weight [kg]
EMV 3	3	Normally closed	2	33	5,0	20	0,200
EMV 5	5	Normally open	4	67	15,0	20	0,518
EMV 10	10	Normally open	20	333	32,0	25	2,510
EMV 15	15	Normally open	34	567	38,4	80	4,665
EMV 20	20	Normally open	53	883	40,8	100	6,375
EMV 25	25	Normally open	88	1467	63,8	135	9,600

Solenoid valves

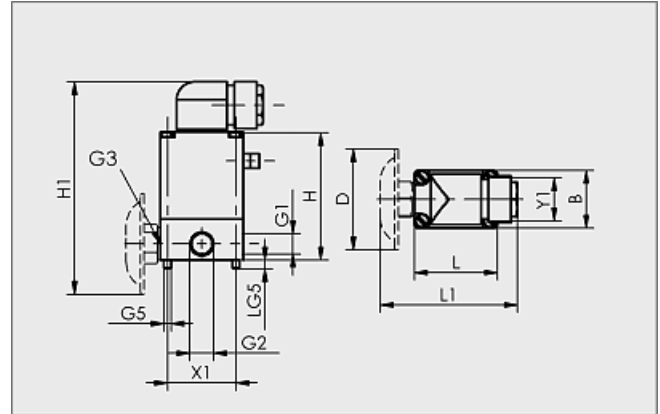
Solenoid valves EMV



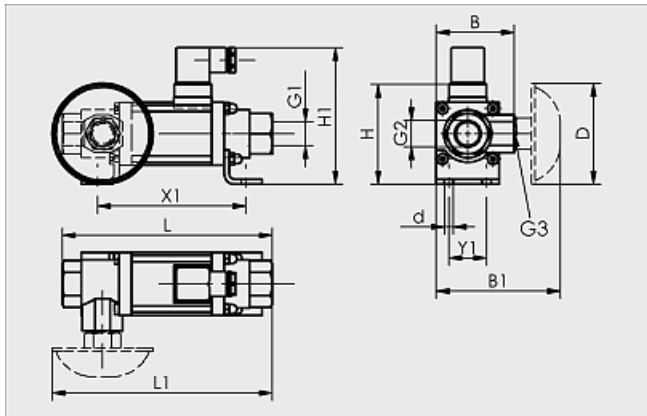
Design data Solenoid valves EMV



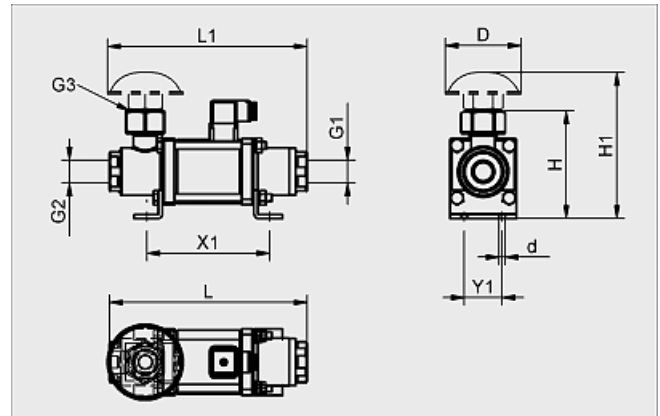
EMV 3



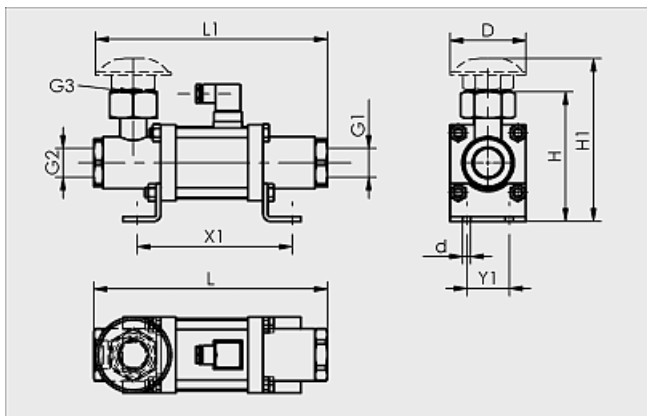
EMV 5



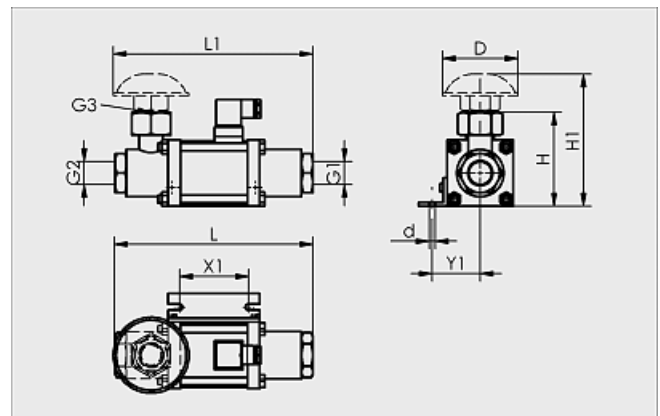
EMV 10



EMV 15



EMV 20



EMV 25

Solenoid valves

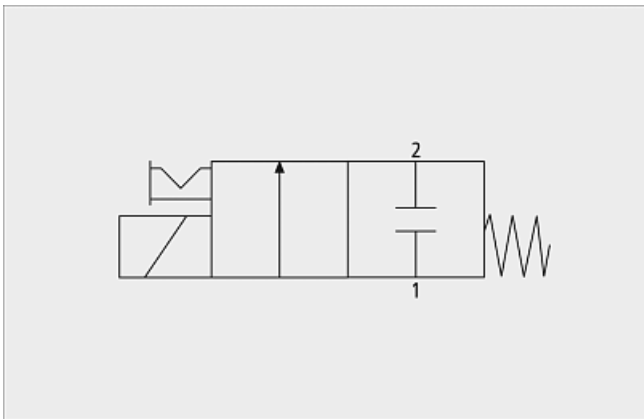
Solenoid valves EMV



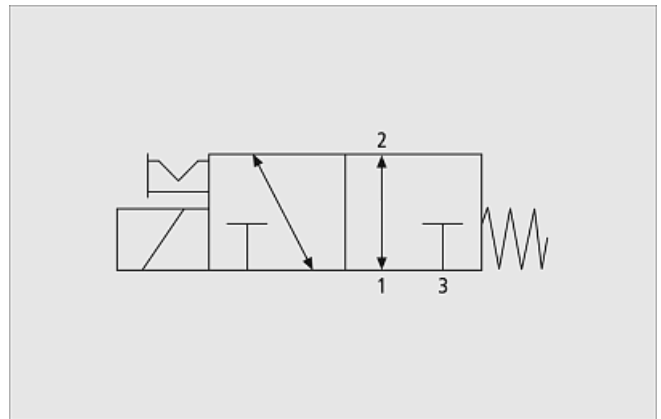
Design data Solenoid valves EMV

Type	Dimensions in mm																
	B	B1	B2	d	D	G1	G2	G3	G5	H	H1	L	L1	LG1	LG5	X1	Y1
EMV 3	-	61,5	47	-	-	G1/4-F	-	-	M3-F	22	60,0	42,0	-	12	5	-	-
EMV 5	32	-	-	-	56	G1/4-F	G1/4-F	G1/4-F	M4-F	71	118,0	46,0	76,0	-	5	38,0	24
EMV 10	62	98,5	-	7,0	80	G1/2-F	G1/2-F	G1/2-F	-	79	108,0	166,5	174,5	-	-	117,5	30
EMV 15	-	-	-	6,5	80	G3/4-F	G3/4-F	G3/4-F	-	113	139,5	209,0	211,0	-	-	133,0	40
EMV 20	-	-	-	8,5	80	G1-F	G1-F	G1-F	-	137	172,0	247,0	245,0	-	-	164,0	45
EMV 25	-	-	-	8,5	80	G1-1/4-F	G1-1/4-F	G1-1/4-F	-	145	180,0	281,0	271,5	-	-	94,0	72

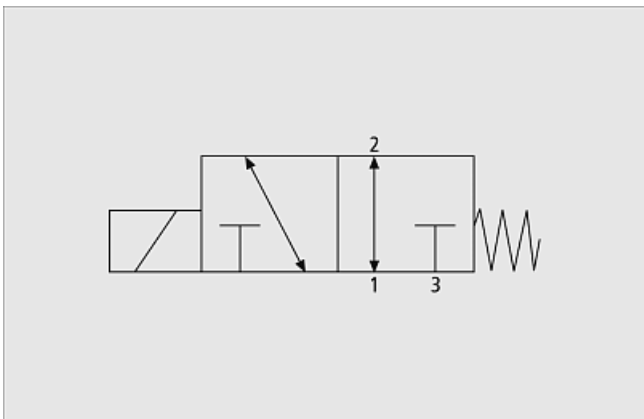
Functional circuit diagram Solenoid valves EMV



Circuit diagram EMV 3



Circuit diagram EMV 5



Circuit diagram EMV 10-25