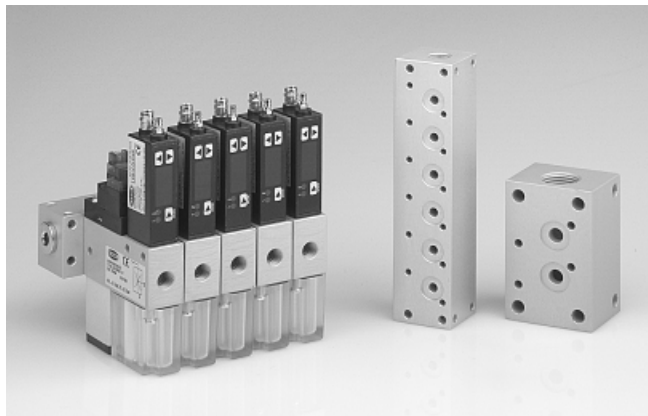


# Compact ejectors

## SMP compressed-air manifold GP



Compressed-air manifold for compact ejectors

### Our highlights...

- Baseplate for the construction of blocks of compact ejectors
- Central compressed-air inlet

### Your advantages...

- > Space-saving construction of ejector blocks
- > Low installation costs

### Applications

- Mounting of compact ejectors in blocks
- Customer-specific solutions are possible

### Construction

- Baseplate made of anodized aluminum for mounting of several compact ejectors
- Central compressed-air inlet can be extended at any time
- Connections not needed for ejectors can be sealed with cover plates
- Delivered complete with gaskets and installation material

5 Vacuum generators



### Suitability for branch-specific applications

### Ordering data SMP compressed-air manifold GP

Type	Type*	Article No.
Compressed-air connection plate	GP 2 SMP 15..30/SCP 20..30	10.02.02.00917
Compressed-air connection plate	GP 3 SMP 15..25/SCP 20..25	10.02.02.00918
Compressed-air connection plate	GP 4 SMP 15..20/SCP 20	10.02.02.00919
Ejector blanking plate	EJEK-PL SCP 10..15	10.02.02.00729
Compressed-air connection plate	GP 5 SMP 15	10.02.02.00920
Compressed-air connection plate	GP 6 SMP 15	10.02.02.00921
Ejector blanking plate	EJEK-PL SMP 15..30/SCP 20..30	10.02.02.00728

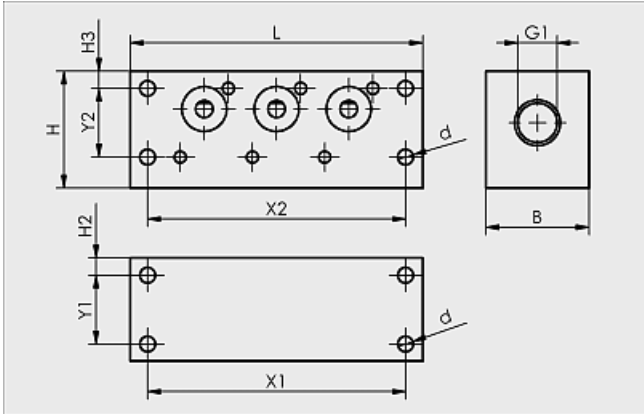
\*EJEK-PL = Plate for covering unused connections

# Compact ejectors

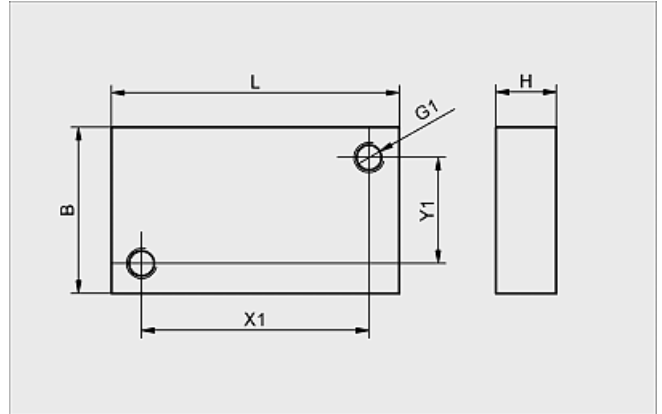
## SMP compressed-air manifold GP



### Design data SMP compressed-air manifold GP



Compressed-air manifold GP SMP15..30/SCP



Ejector blanking plate EJEK-PL ...

Type	Dimensions in mm											Number of outputs	Weight [g]
	B	d	G1	H	H2	H3	L	X1	X2	Y2			
GP 2 SMP 15..30/SCP 20..30	38	7	G1/2-F	49,5	7	8	78	62,0	62	34	2	375	
GP 3 SMP 15..25/SCP 20..25	38	7	G1/2-F	49,5	7	8	101	85,0	85	34	3	481	
GP 4 SMP 15..20/SCP 20	38	7	G1/2-F	49,5	7	8	124	108,0	108	34	4	595	
EJEK-PL SCP 10..15	20	-	-	6,0	7	8	26	20,0	20	34	-	9	
GP 5 SMP 15	38	7	G1/2-F	49,5	7	8	147	131,0	131	34	5	700	
GP 6 SMP 15	38	7	G1/2-F	49,5	7	8	170	154,0	154	34	6	807	
EJEK-PL SMP 15..30/SCP 20..30	22	-	-	8,0	7	8	38	30,0	-	-	-	17	