

Inline ejectors

Inline ejectors SLP



Inline ejectors SLP

Our highlights...

- Inline vacuum generator with axial connections
- Weight = 5 g!
- Nozzles with high suction capacity at high vacuum values
- Slimline plastic housing designed for easy handling
- Connection by means of push-in couplings
- Air outlet optimized for minimum noise levels

Your advantages...

- >Direct installation in the vacuum hose
- >Ideal for highly dynamic processes
- >Minimum air consumption
- >Suitable for installation in restricted spaces
- >No need for additional connecting elements
- >Low noise output



Application example inline ejector SLP

Applications

- Direct installation in the vacuum hose
- Use in feeder systems
- Handling of electronic components
- Use in separation systems for plastic and sheet-metal machining



Handling of plastic parts

Construction

- Vacuum generator with single nozzle in two power ratings, 0.5 and 0.7 mm diameter
- Axial connection of compressed air and vacuum with quick-action push-in couplings for hose diameter 4 mm
- Two-piece housing made of light, impact-resistant plastic
- Air outlet with good flow characteristics
- Pleasing industrial design, only 10 mm thick

Suitability for branch-specific applications



Inline ejectors

Inline ejectors SLP



Designation code Inline ejectors SLP

Short designation	Nozzle size in mm*10	Connection
Example: SLP	07	S1
SLP	05...0.5 mm 07...0.7 mm	S...Quick-action push-in coupling



Ordering data Inline ejectors SLP

Type	Article No.
SLP 05 S1	10.02.01.00561
SLP 07 S1	10.02.01.00562



Technical data Inline ejectors SLP

Type	Nozzle-Ø [mm]	Degree of evacuation [%]	Max. suction rate [l/min]	Max. suction rate [m³/h]	Air consumpt. during evac. [l/min]*	Air consumpt. during evac. [m³/h]*
SLP 05 S1	0,5	85	8	0,5	13	0,8
SLP 07 S1	0,7	85	16	1,0	25	1,5

*At optimal operating pressure

**Up to a length of 2 m

Type	Noise level workp. gripped [db(A)]	Noise level free [db(A)]	Operating pressure [bar]	Recomm. int. hose diameter compr. air/vacuum [mm]**	Weight [g]	Operating temperature [°C]
SLP 05 S1	52	60	4,5	2	5	0...60
SLP 07 S1	63	63	4,5	2	5	0...60

*At optimal operating pressure

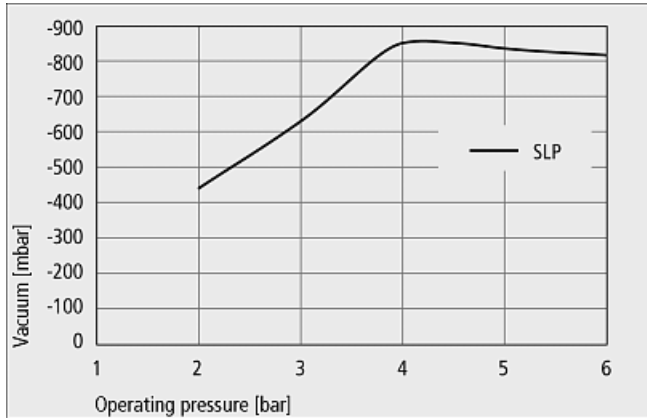
**Up to a length of 2 m

Inline ejectors

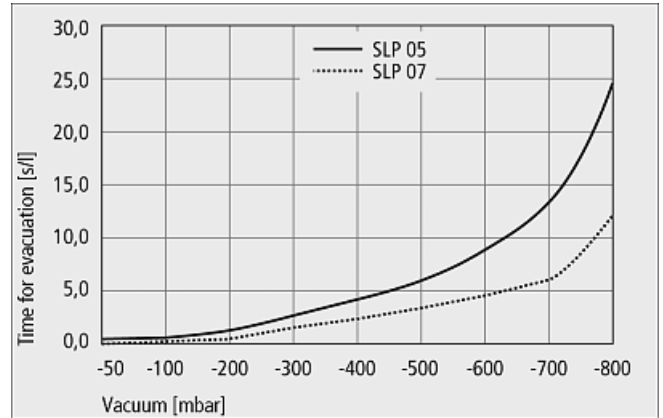
Inline ejectors SLP



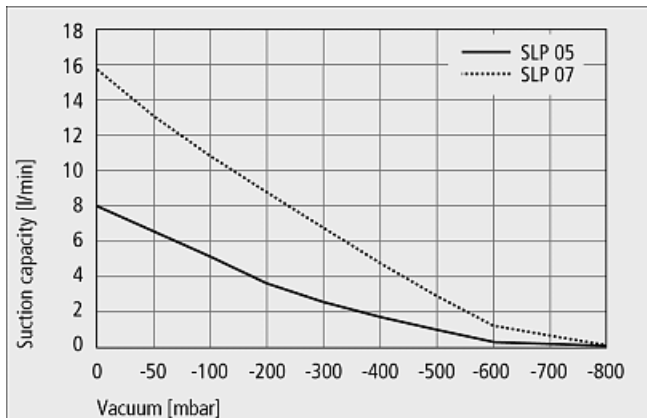
Performance data Inline ejectors SLP



Achievable vacuum at various operating pressures



Evacuation times for various vacuum ranges



Suction capacity at various degrees of evacuation

Suction capacity in l/min at various degrees of evacuation

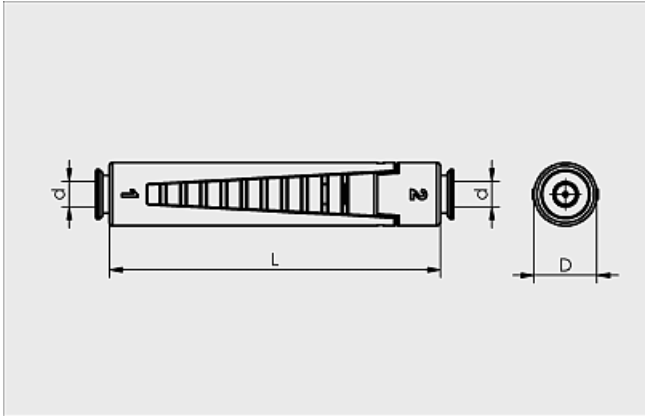
Type	Degree of evacuation in mbar									
	0	-50	-100	-200	-300	-400	-500	-600	-700	-800
SLP 05	8.00	6.42	4.97	3.76	2.65	1.79	1.06	0.32	0.10	0.05
SLP 07	15.90	13.30	10.89	8.70	6.67	4.65	2.88	1.29	0.55	0.06

Evacuation time in s/l for various vacuum ranges

Type	Degree of evacuation in mbar									
	-50	-100	-200	-300	-400	-500	-600	-700	-800	
SLP 05	0.4	0.7	1.6	2.7	4.0	5.8	8.5	13.1	24.5	
SLP 07	0.2	0.4	0.8	1.4	2.2	3.2	4.6	6.7	12.7	

Inline ejectors

Inline ejectors SLP



SLP

Design data Inline ejectors SLP

Type	Dimensions in mm		
	d	D	L
SLP 05 S1	4	10	57
SLP 07 S1	4	10	57