

Suction pads for high-temperature applications



High-temperature suction plates SPL-HT



High temperature suction plates SPL-HT ST

Our highlights...

- Stainless-steel body; seal made of special textile materials
- The only suction plate which withstands temperatures of up to 600°C!
- Seal quickly and easily replaceable

Your advantages...

- >Very high temperature resistance (even for long periods)
- >Even hot workpieces can now be gripped safely and carefully with vacuum
- >Seal can be replaced separately when worn or damaged

Applications

- Handling of workpieces with smooth surfaces
- Suitable, for example, for use in the manufacture of float glass or in tempering processes in the glass industry
- Hot forming in the metal industry



Construction

- Robust stainless-steel body
- Seal clamped into the body and quickly replaceable
- Seal made of special textile material for handling hot workpieces

Suitability for branch-specific applications

Designation code High-temperature suction plates SPL-HT

Short designation	Diameter in mm	Material and shore hardness	Connection thread
Example: SPL-HT	35	ST	G1/4-IG
SPL-HT	35 60 90 140	ST...Special woven silicate material	G1/4-IG (IG = female) G3/8-IG

Ordering data High-temperature suction plates SPL-HT

Type	Article No.
SPL-HT 35 ST G1/8-IG	10.01.23.00023
SPL-HT 60 ST G1/4-IG	10.01.23.00006
SPL-HT 90 ST G1/4-IG	10.01.23.00007
SPL-HT 140 ST G3/8-IG	10.01.23.00008

Ordering data spare parts suction pads

Type	Sealing ring DR-SPL-HT
SPL-HT 35 ST G1/8-IG	10.01.23.00022
SPL-HT 60 ST G1/4-IG	10.01.23.00001
SPL-HT 90 ST G1/4-IG	10.01.23.00016
SPL-HT 140 ST G3/8-IG	10.01.23.00018

Suction pads for high-temperature applications



High-temperature suction plates SPL-HT

Vacuum suction pads
2

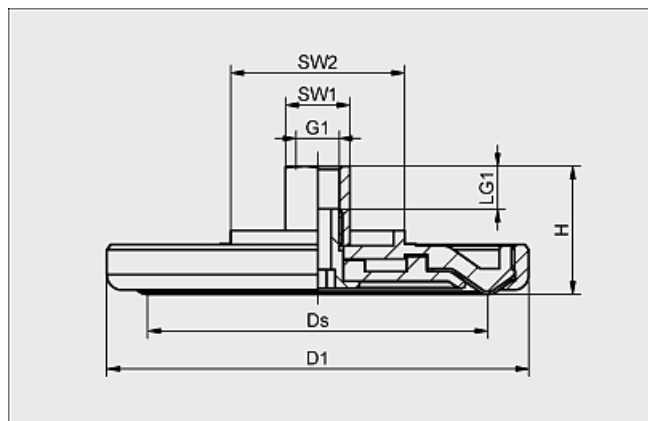
Technical data High-temperature suction plates SPL-HT

Type	Suction force [N]*	Volume [cm ³]	Required evacuation rate for pu = -0,7 bar [l/min]**	Weight [g]	Recom. internal hose diameter d [mm]
SPL-HT 35 ST G1/8-IG	47	4	55	225	4
SPL-HT 60 ST G1/4-IG	130	12	78	375	6
SPL-HT 90 ST G1/4-IG	320	25	100	675	6
SPL-HT 140 ST G3/8-IG	740	50	120	1390	9

*The suction-force figures are theoretical values at a vacuum of -0.6 bar and with a smooth, flat workpiece surface. They are specified without any safety factor. A safety factor of at least 3 should be used during system design.

**The recommended suction capacity is based on an average workpiece temperature of about 300°C. We recommend testing with original workpieces.

Design data High-temperature suction plates SPL-HT



SPL-HT 35-140 ST

Type	Dimensions in mm*							
	dn	D1	Ds	G1	H	LG1	SW1	SW2
SPL-HT 35 ST G1/8-IG	5	53	35	G1/8"-F	29	12	14	27
SPL-HT 60 ST G1/4-IG	7	80	58	G1/4"-F	39	12	17	27
SPL-HT 90 ST G1/4-IG	7	112	90	G1/4"-F	39	12	17	46
SPL-HT 140 ST G3/8-IG	8	160	138	G3/8"-F	39	12	22	95