

# Suction pads for different branches



Flat suction pads SGN 20 to SGN 100



Special suction pads SGN 20 to SGN 100

## Our highlights...

- Robust and hard-wearing suction pad
- Bottom surface of suction pad with molded studs

## Your advantages...

- > Suitable for use under rough operating conditions
- > High suction force and high frictional resistance to lateral forces

## Applications

- Handling of smooth workpieces with very dynamic movements
- Handling under rough operating conditions

## Construction

- Robust and hard-wearing suction pad SGN with single sealing lip and connection nipple vulcanised into position for handling maximum loads
- Connection nipple available only with a male thread



## Suitability for branch-specific applications

## Designation code Flat suction pads SGN 20 to SGN 100

Short designation	Diameter in mm	Material and short hardness	Connection thread
Example: SGN	50	NBR-55	G1/8-AG
SGN...with connection nipple	20 to 100	NBR-55	G1/8-AG (AG = male) G1/4-AG

## Ordering data Flat suction pads SGN 20 to SGN 100

Type	Article No.
SGN 20 NBR-55 G1/8-AG	10.01.01.00201
SGN 30 NBR-55 G1/8-AG	10.01.01.00202
SGN 50 NBR-55 G1/8-AG	10.01.01.00203
SGN 80 NBR-55 G1/4-AG	10.01.01.00204
SGN 100 NBR-55 G1/4-AG	10.01.01.00205

# Suction pads for different branches



## Flat suction pads SGN 20 to SGN 100

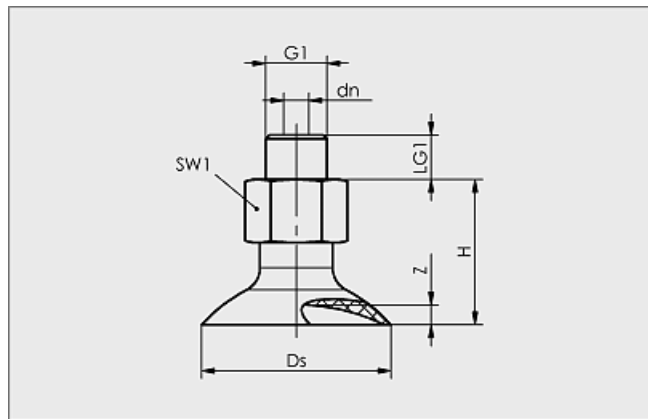
Vacuum suction pads  
2

### Technical data Flat suction pads SGN 20 to SGN 100

Type	Suction force [N]*	Volume [cm <sup>3</sup> ]	Min. curve radius [mm] (convex)	Recom. internal hose diameter d [mm]
SGN 20 NBR-55 G1/8-AG	20	0,150	25	4
SGN 30 NBR-55 G1/8-AG	35	0,562	40	4
SGN 50 NBR-55 G1/8-AG	90	1,833	210	4
SGN 80 NBR-55 G1/4-AG	220	3,011	300	6
SGN 100 NBR-55 G1/4-AG	340	14,661	450	6

\*The specified suction forces are theoretical values at a vacuum of -0.6 bar and with a smooth, dry workpiece surface - they do not include a safety factor

### Design data Flat suction pads SGN 20 to SGN 100



SGN 20 to 100 AG

Type	Dimensions in mm*						
	dn	Ds	G1	H	LG1	SW1	Z
SGN 20 NBR-55 G1/8-AG	1,5	20	G1/8"-M	18	7	14	2,3
SGN 30 NBR-55 G1/8-AG	4,0	30	G1/8"-M	23	7	14	3,6
SGN 50 NBR-55 G1/8-AG	4,0	50	G1/8"-M	26	7	14	5,0
SGN 80 NBR-55 G1/4-AG	6,0	80	G1/4"-M	38	9	22	5,0
SGN 100 NBR-55 G1/4-AG	6,0	100	G1/4"-M	41	9	22	10,0

\*Acceptable dimensional tolerances for rubber parts concerning to M3 - DIN 7715