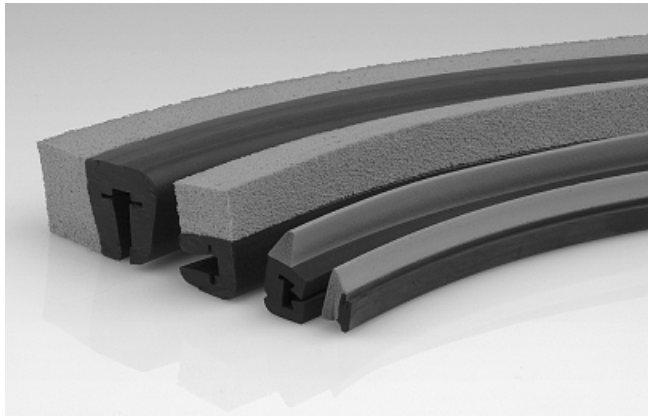


Sealing profiles

Sealing profiles DI-PROF



Sealing sections DI-PROF

Our highlights...

- Sealing strip in any desired length
- Sealing profile made of two-component section

Your advantages...

- > Self-construction of "vacuum grippers" in any desired shape and size to match specific workpieces
- > High-strength support strip with foam rubber seal vulcanised or glued to it, for sealing to very rough or structured surfaces (such as ornamental glass, rough natural stone, concrete blocks, etc.)

Applications

- Production of self-made, individual suction plates
- Adaptation of suction plates to match special workpieces
- Handling of sacks, barrels and similar objects with irregular surfaces

Construction

- Robust and hard-wearing sealing profiles in various cross-sections
- Profile 2K-MOS-20: sealing strip made of foam rubber, vulcanised to support strip (Supporting and sealing section made of Chloroprene CR)
- Profile 2K-SWG-20: sealing strip made of foam rubber, glued to support strip (Supporting section NBR, sealing section natural rubber NK)
- High-strength supporting-section material with profile on the sides for plugging into a corresponding mounting plate



Suitability for branch-specific applications

Designation code Sealing profiles DI-PROF

Short designation	Dimensions in mm	Material and shore hardness*
Example: DI-PROF	6.5 x 6	2K-MOS-20
DI-PROF	6.5 x 6 9 x 9.7 20 x 15 30 x 25	2K-SWG-20 2K-MOS-20

*Average shore hardness

Ordering data Sealing profiles DI-PROF

Type*	Article No.
DI-PROF 5.5x8 2K-MOS-20	10.01.01.10554
DI-PROF 9x9.7 2K-MOS-20	10.01.01.10527
DI-PROF 20x15 2K-SWG-20	10.07.04.00040
DI-PROF 30x25 2K-SWG-20	10.07.04.00041

*Accounting unit [1m]

Sealing profiles

Sealing profiles DI-PROF

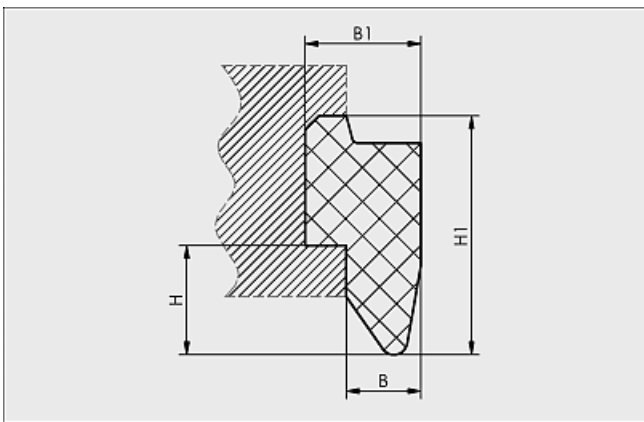


Technical data Sealing profiles DI-PROF

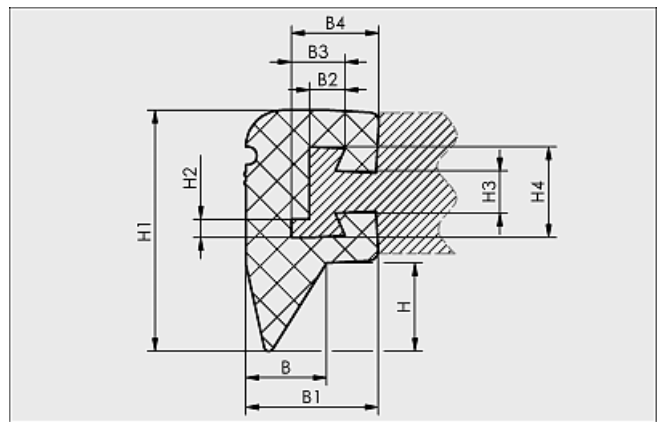
Type	Min. installation radius [mm]	Operating temperature [°C]
DI-PROF 5.5x8 2K-MOS-20	65	-30...90
DI-PROF 9x9.7 2K-MOS-20	85	-30...90
DI-PROF 20x15 2K-SWG-20	120	-35...70
DI-PROF 30x25 2K-SWG-20	200	-35...70

*The specified suction forces are theoretical values at a vacuum of -0.6 bar and with a smooth, dry workpiece surface - they do not include a safety factor

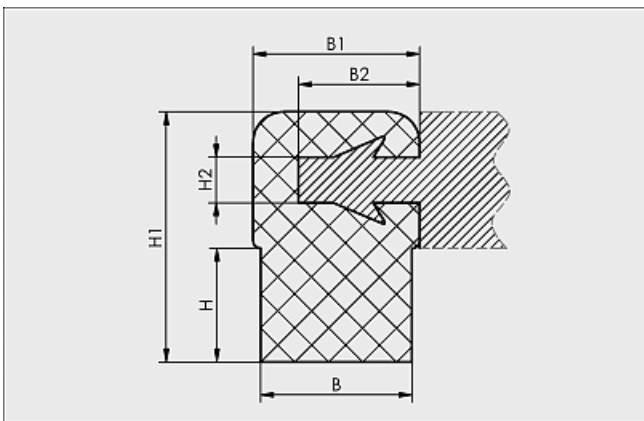
Design data Sealing profiles DI-PROF



DI-PROF 5.5x8



DI-PROF 9x9.7



DI-PROF 20x15 and 30x25

Type	Dimensions in mm*									
	B	B1	B2	B3	B4	H	H1	H2	H3	H4
DI-PROF 5.5x8 2K-MOS-20	5,5	8,5	-	-	-	8,0	17,5	-	-	-
DI-PROF 9x9.7 2K-MOS-20	9,0	14,5	3,9	5,9	9,6	9,7	26,5	2	4,7	10
DI-PROF 20x15 2K-SWG-20	20,0	22,0	16,0	-	-	15,0	33,0	6	-	-
DI-PROF 30x25 2K-SWG-20	30,0	32,0	24,0	-	-	25,0	53,0	8	-	-

*Acceptable dimensional tolerances for rubber parts concerning to M3 - DIN 7715